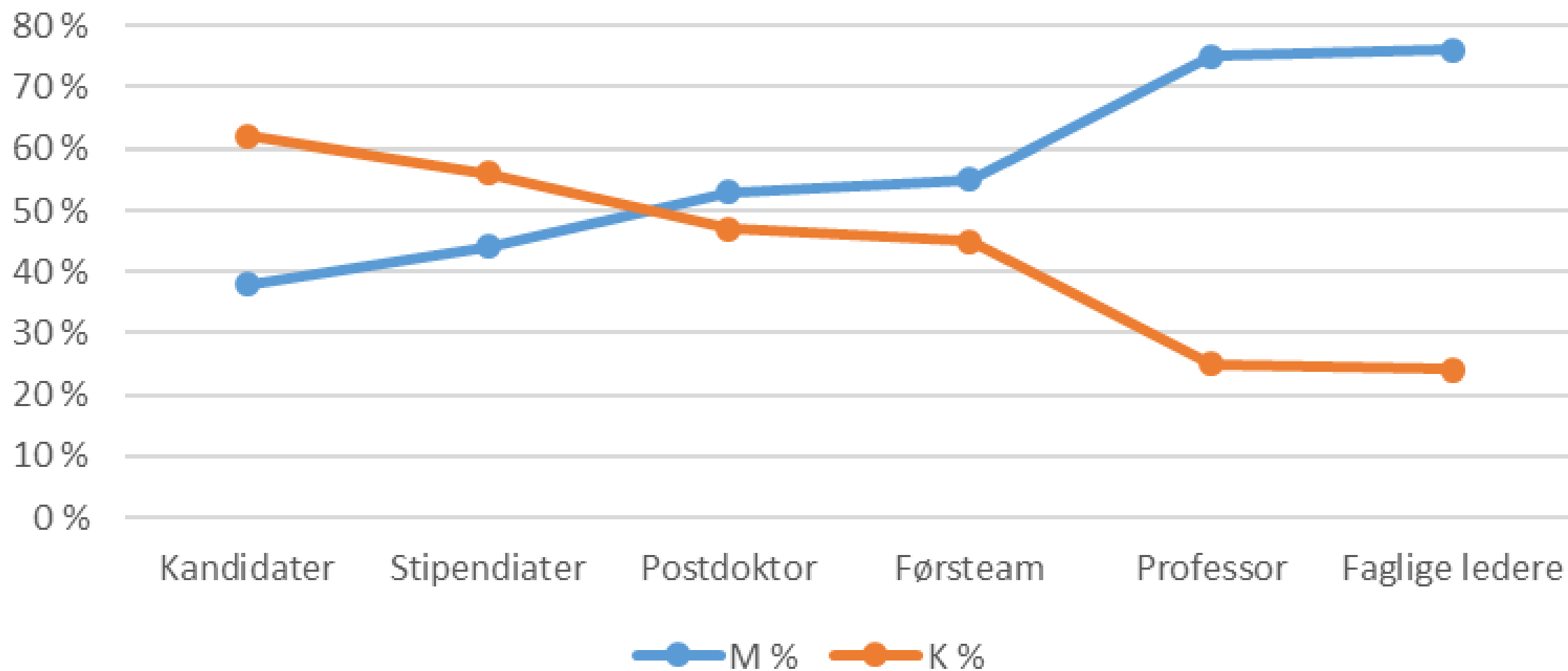


Kjønnsbalanseutvikling Matnat og UiB

Det matematisk-naturvitenskapelige fakultet UiB

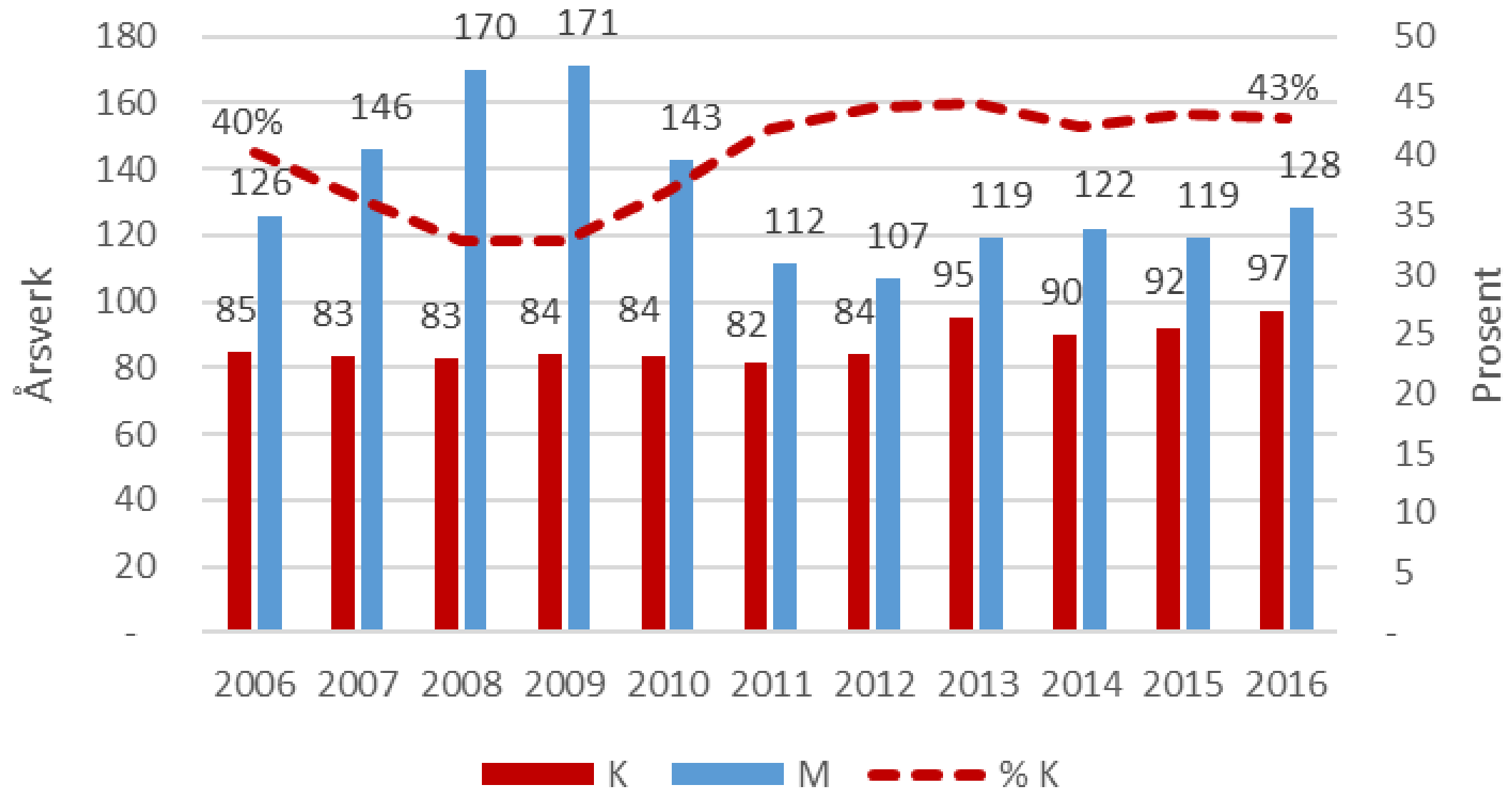
Basert på data fra Database for høyere utdanning (DBH) – offisiell årsverksstatistikk for sektoren pr 1. oktober hvert år – inkluderer permisjoner

Andel kvinner og menn på den akademiske karrierestigen fra student til faglig ledelse, UiB 2016

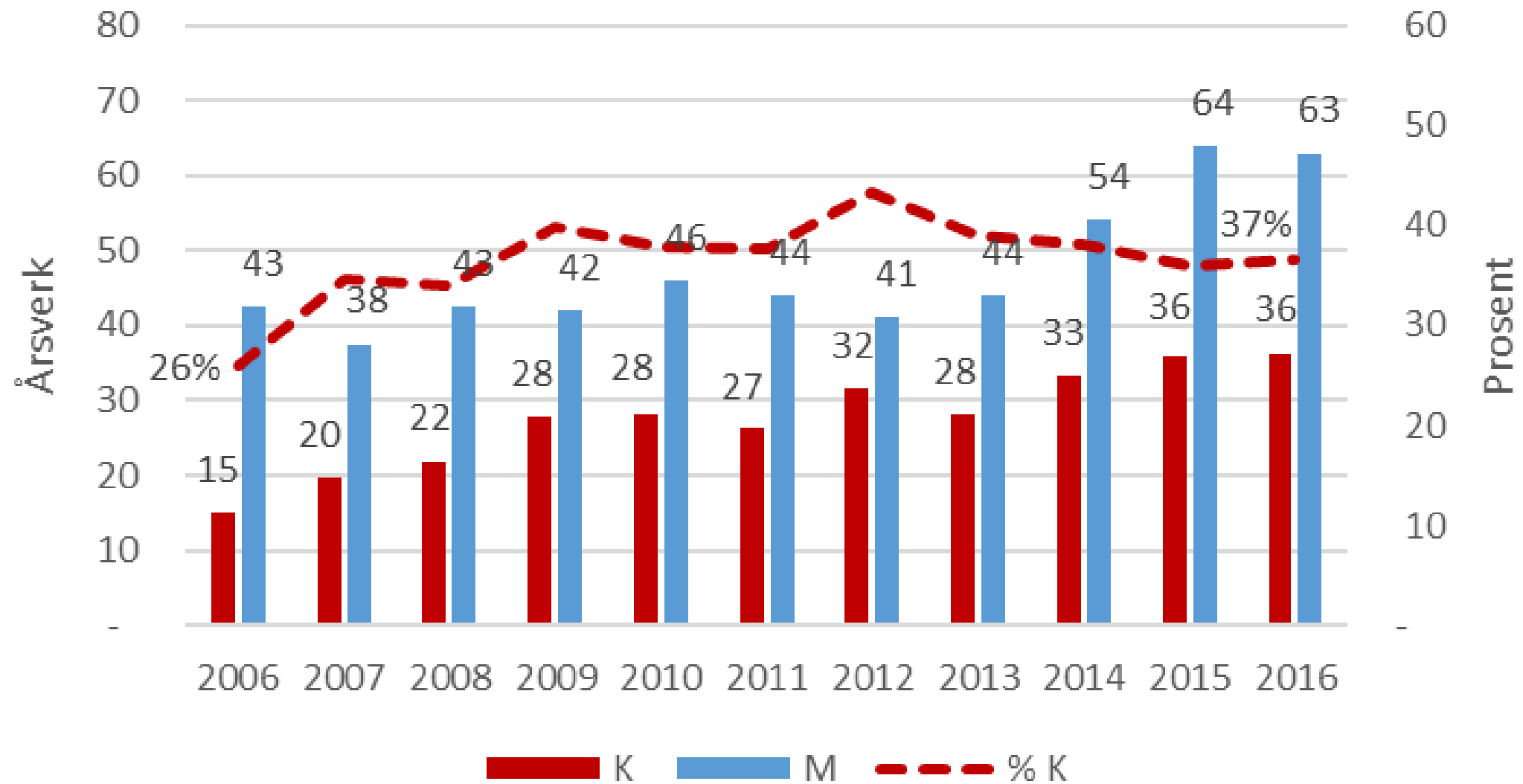


Vitenskapelige stillinger Matnat

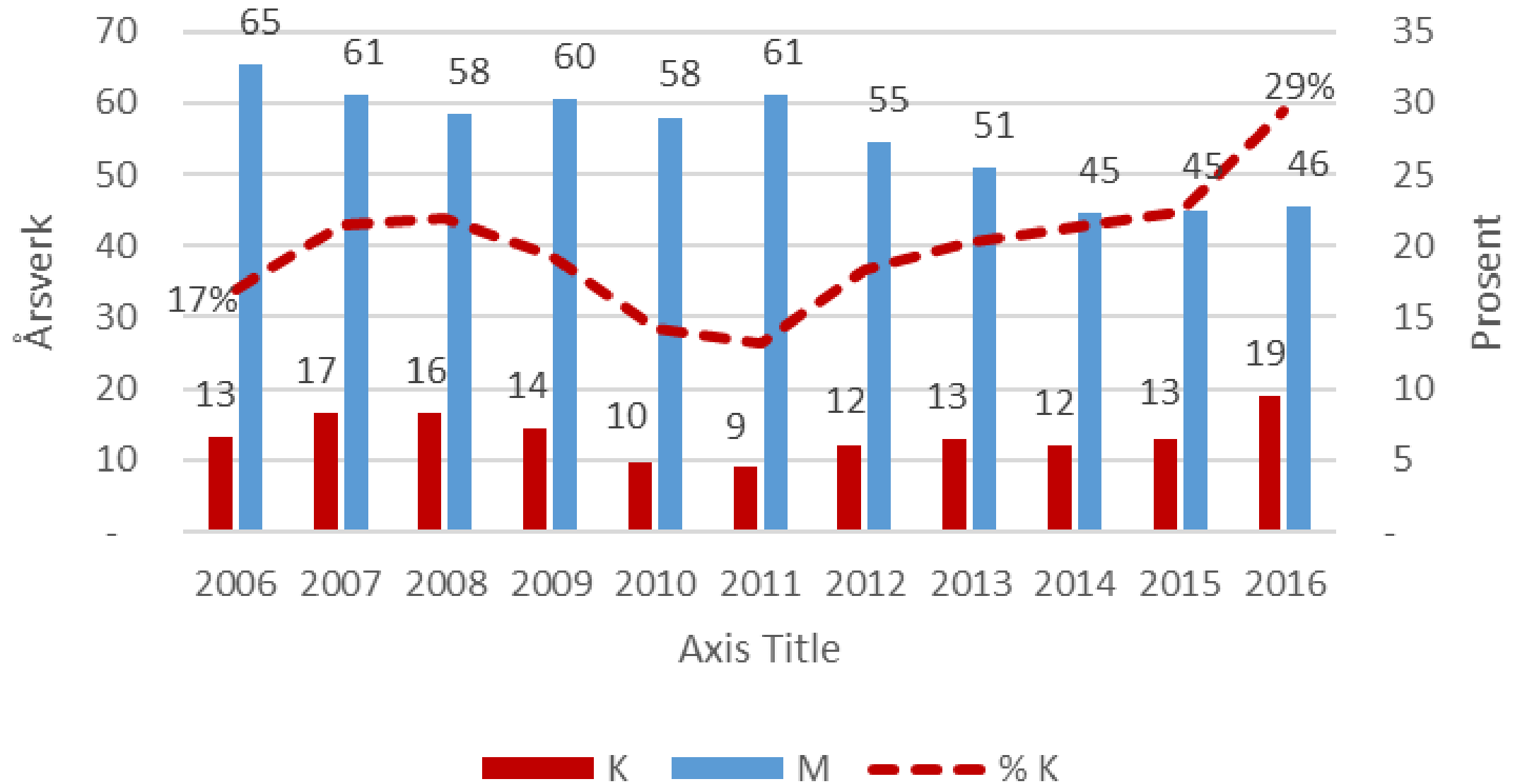
Stipendiater menn og kvinner



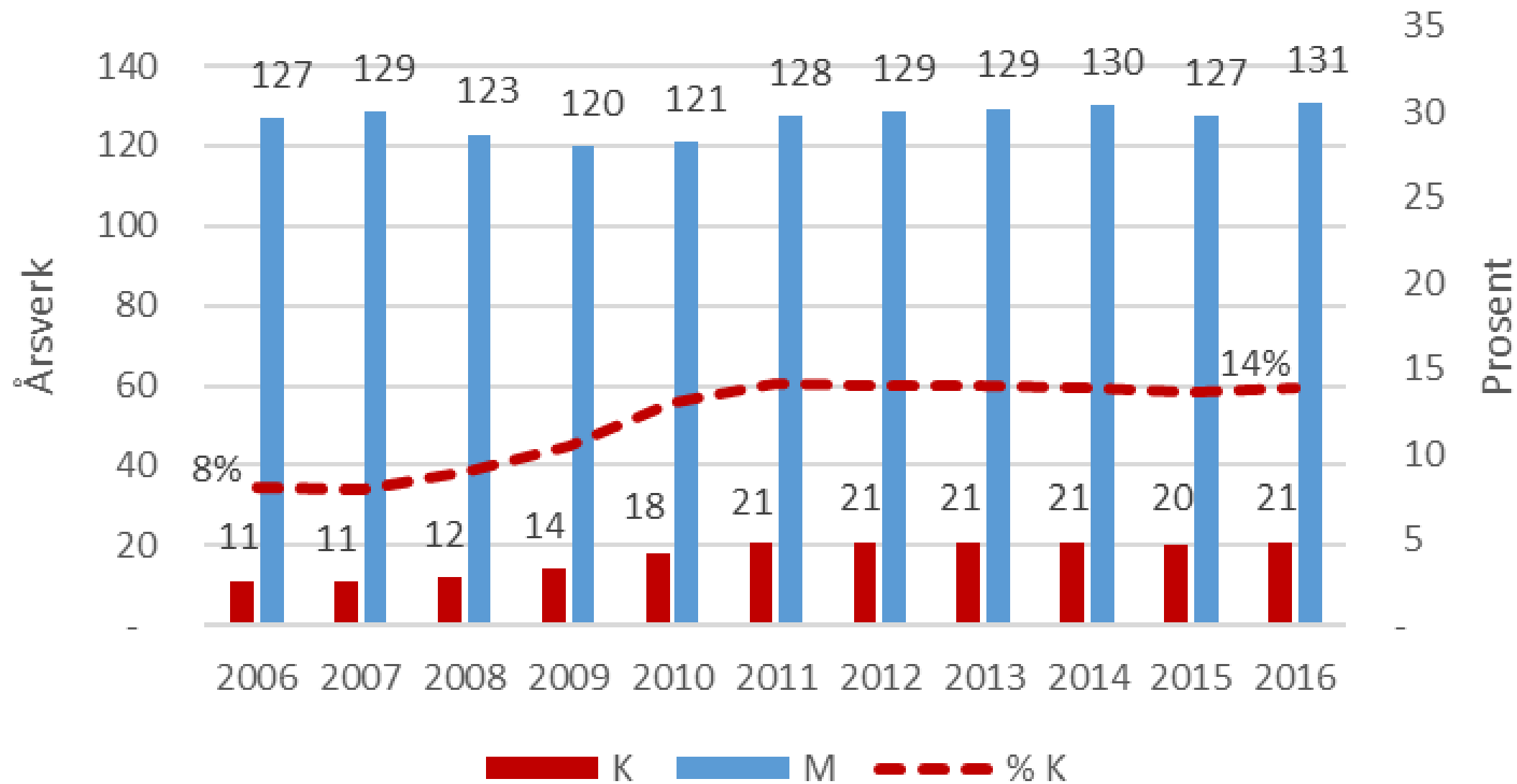
Postdoktorer menn og kvinner



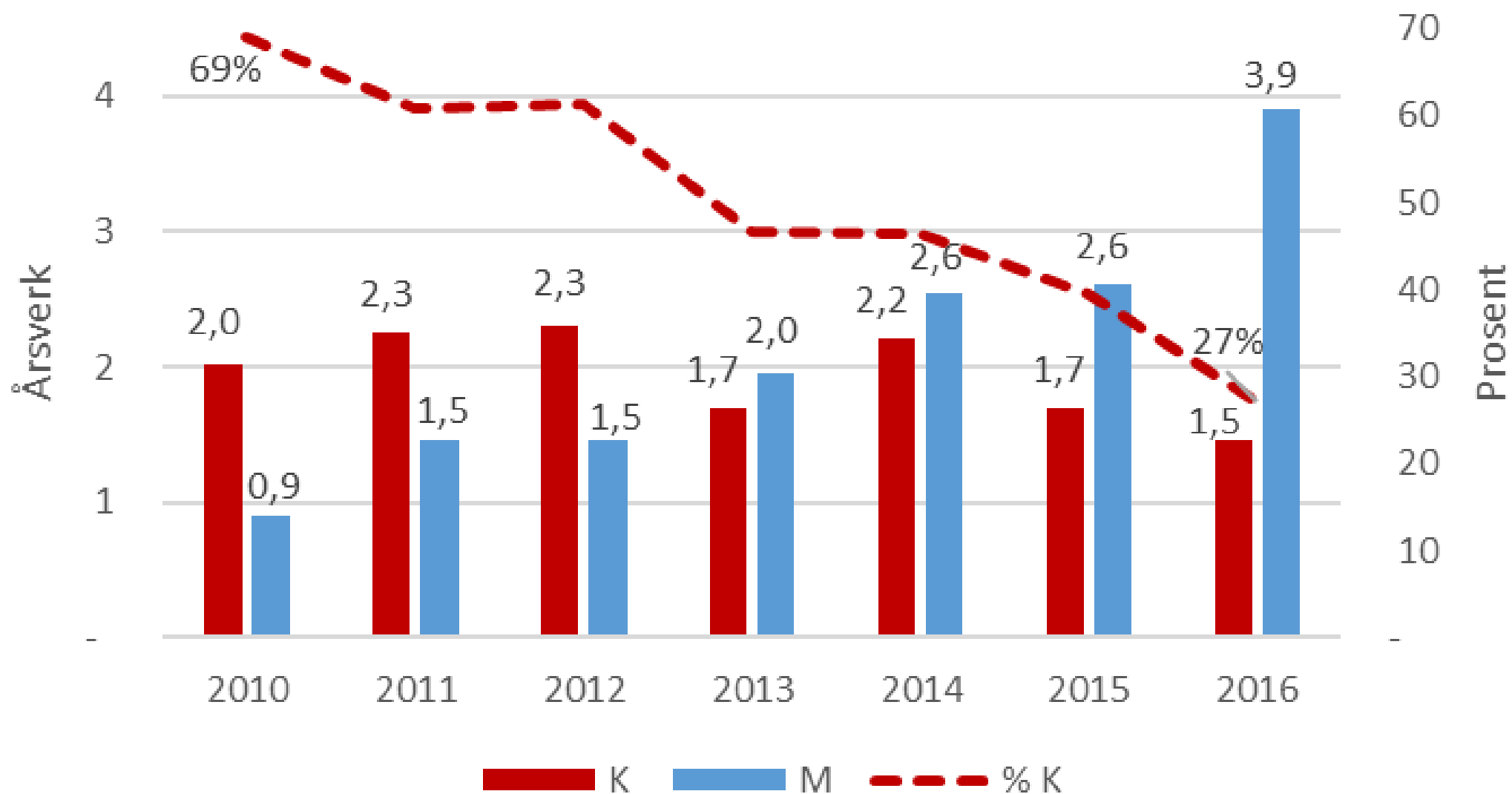
Førsteamanuensis menn og kvinner



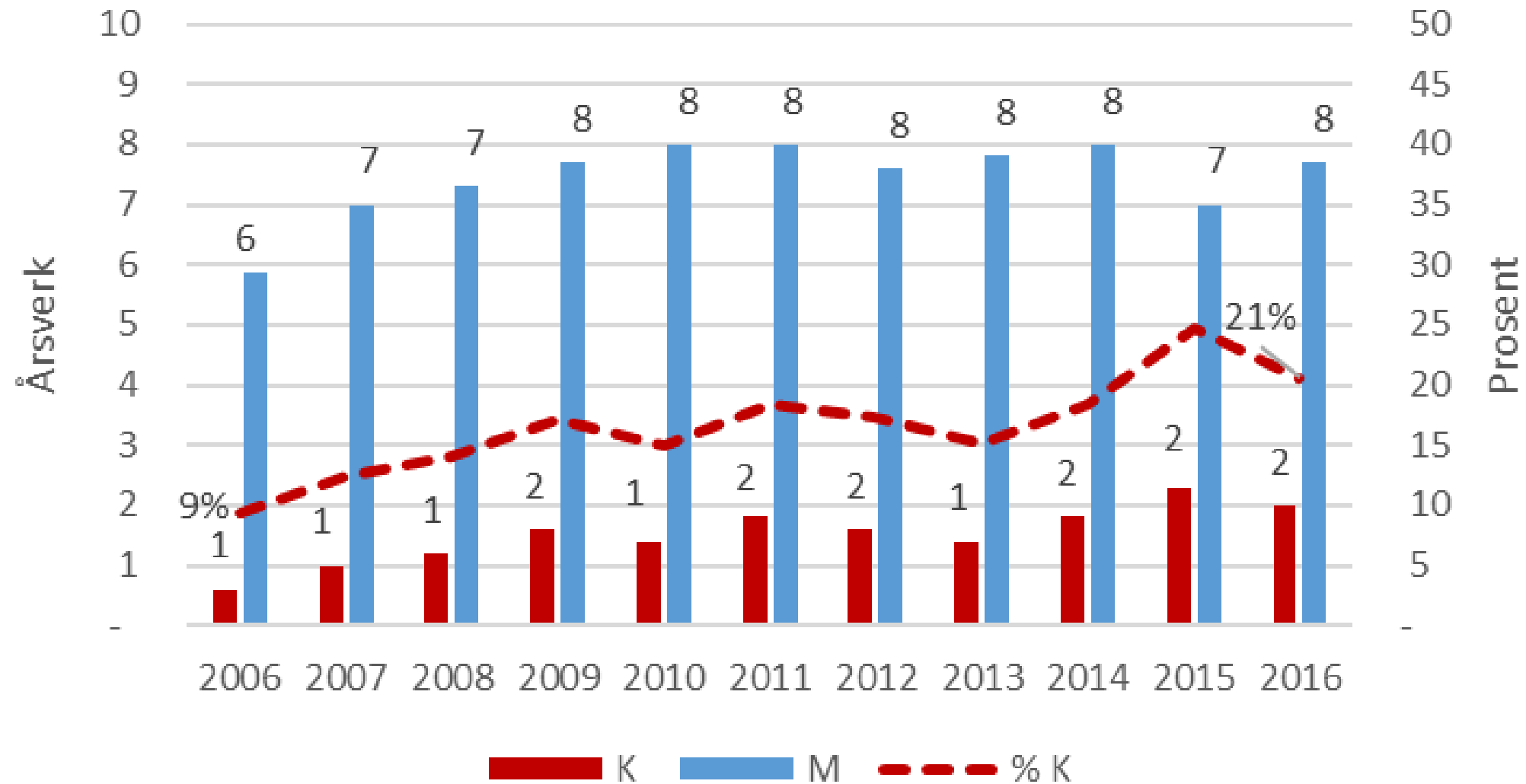
Professor menn og kvinner



Førsteaman. II menn og kvinner (x5 for ca "hoder")

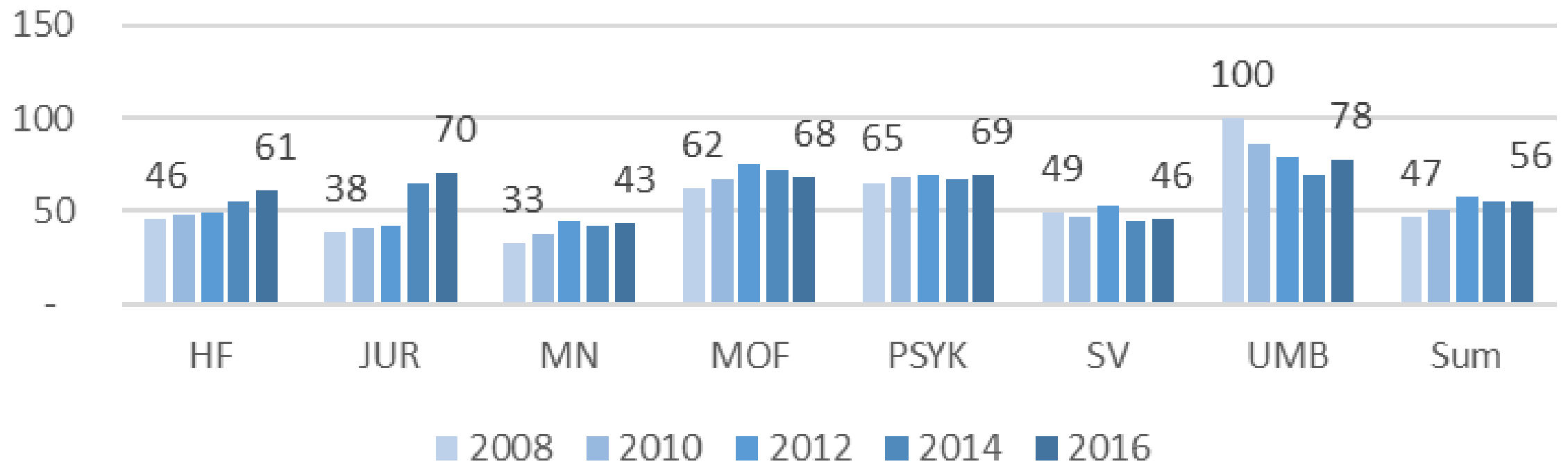


Professor II menn og kvinner (x5 for ca "hoder")

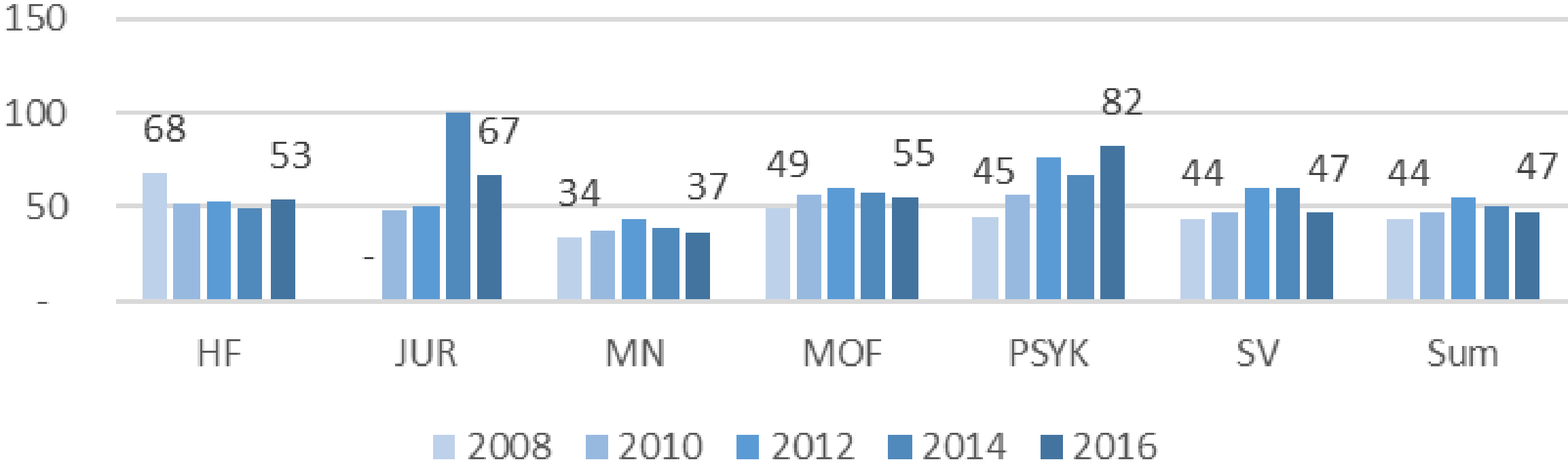


Vitenskapelige stillinger UiB

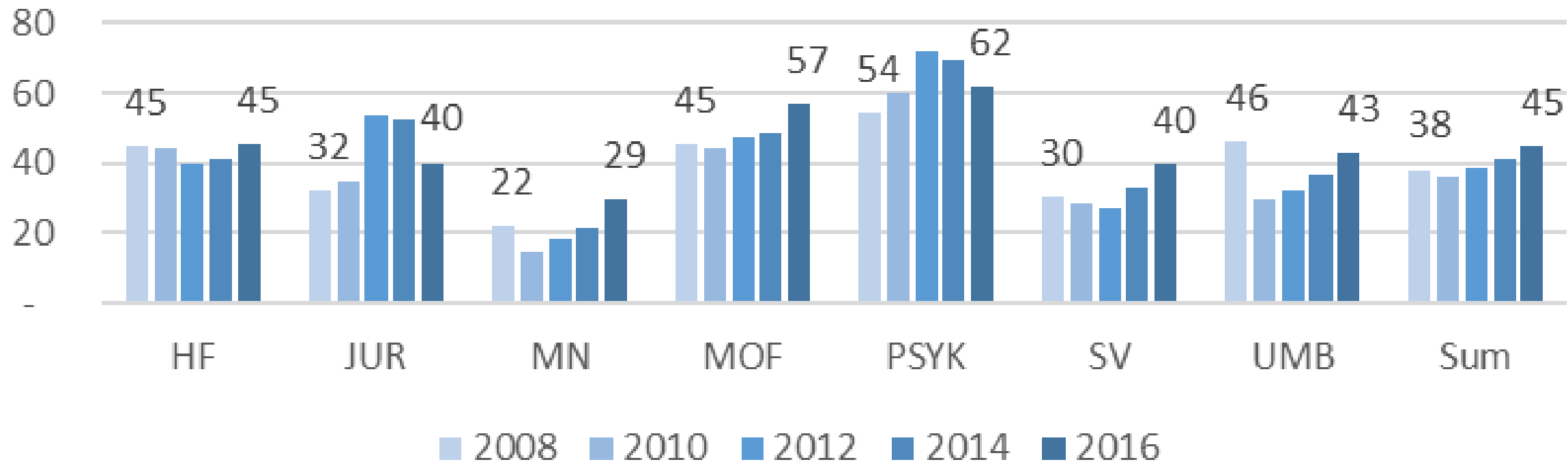
Stipendiat - prosent kvinner



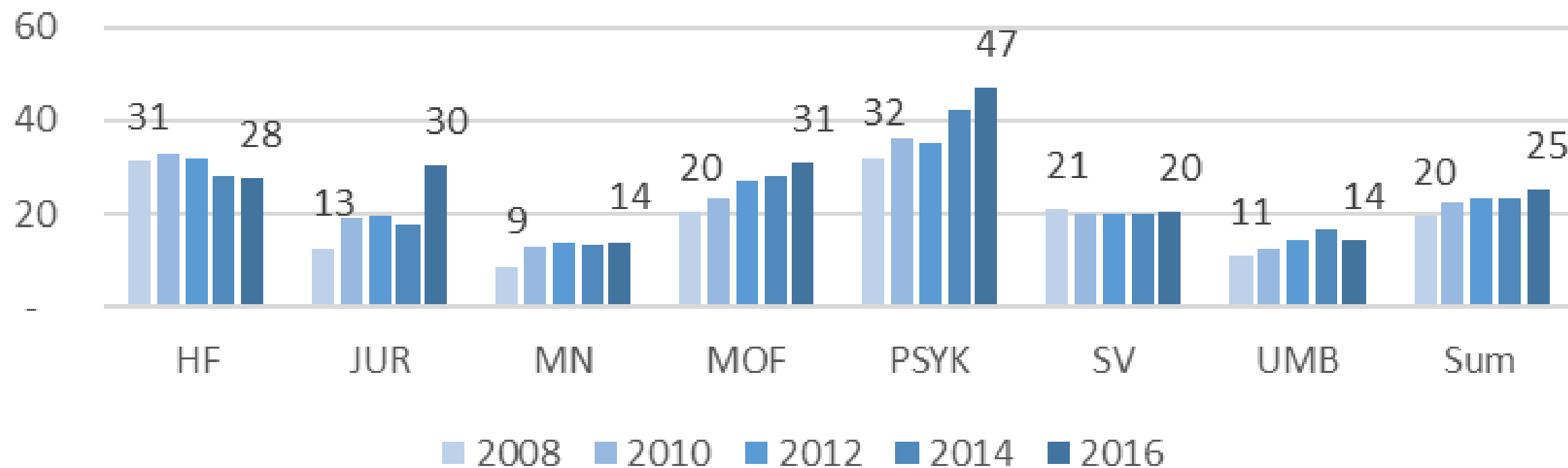
Postdoktor - prosent kvinner



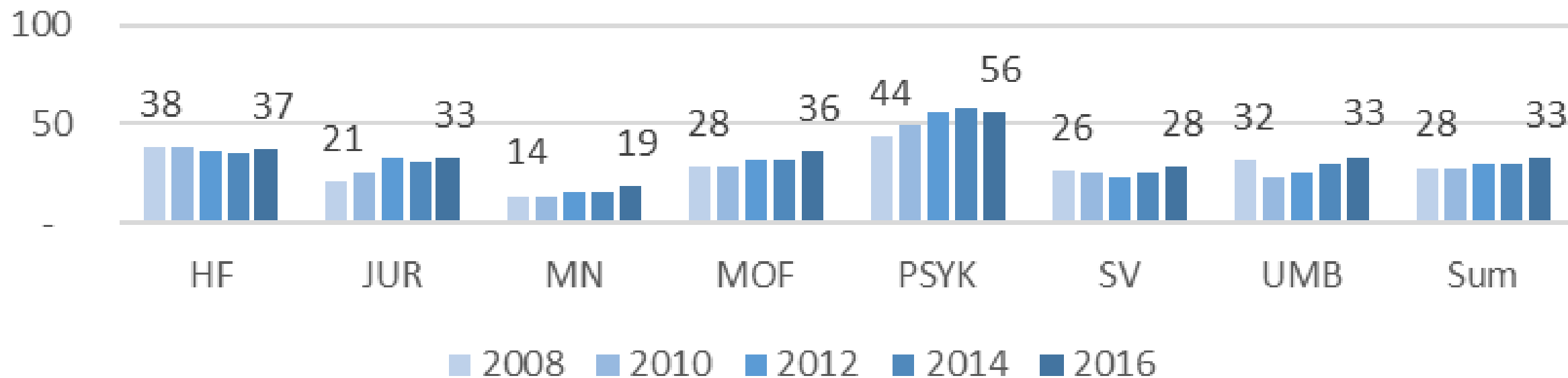
Førsteamanuensis (kode 1011) - prosent kvinner



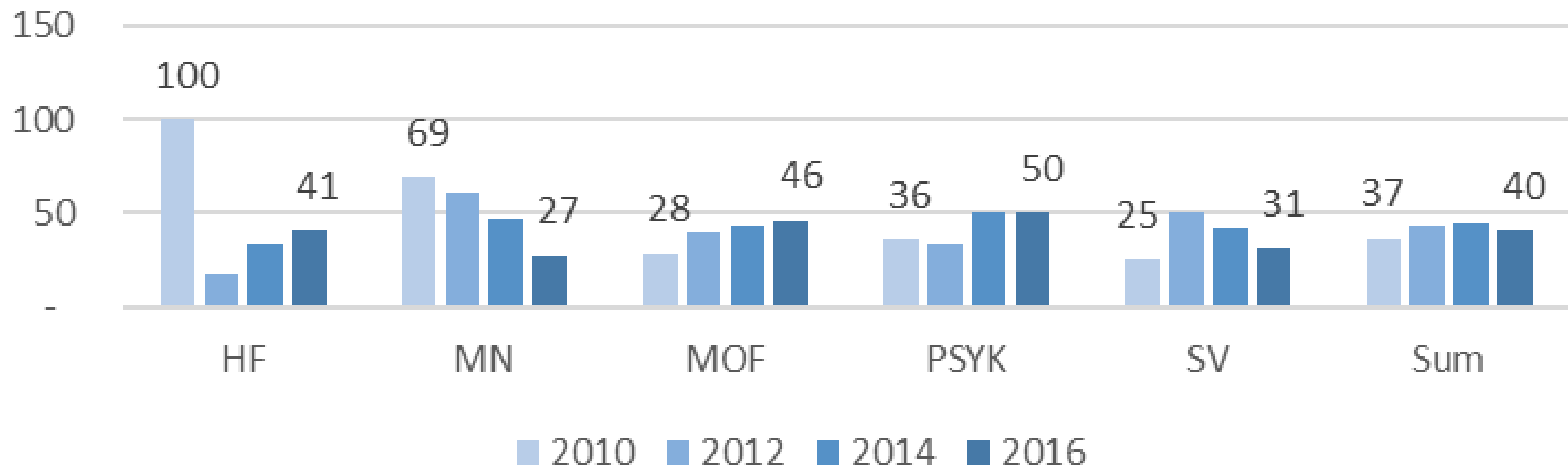
Professor (kode 1013 og 1404) - prosent kvinner



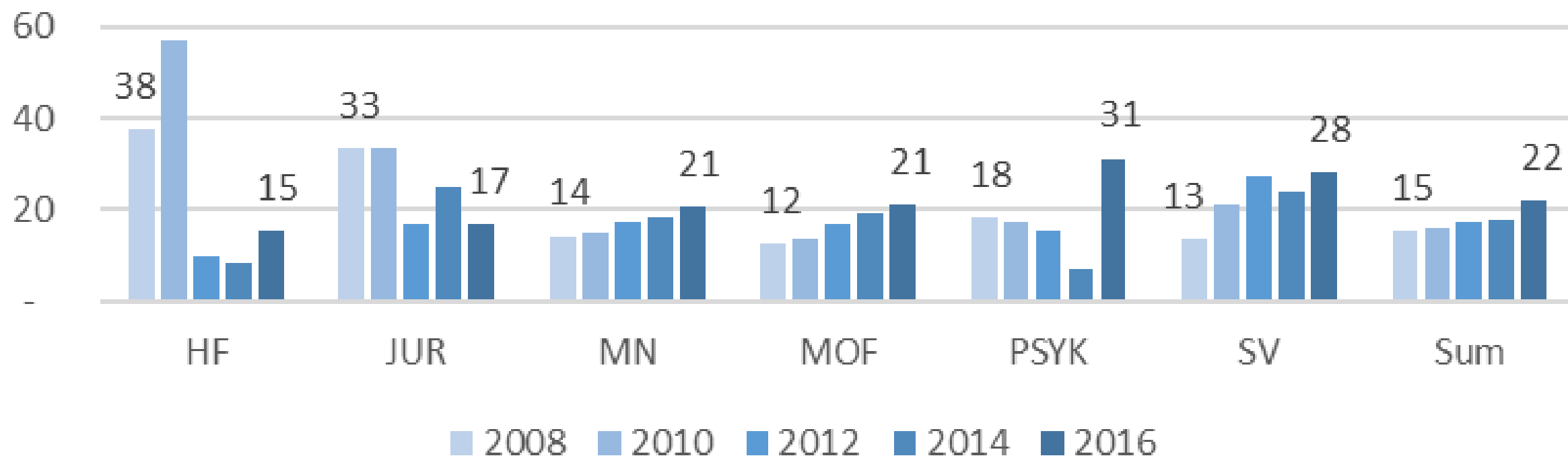
Førsteamanuenser og professorer sammenlagt - prosent kvinner



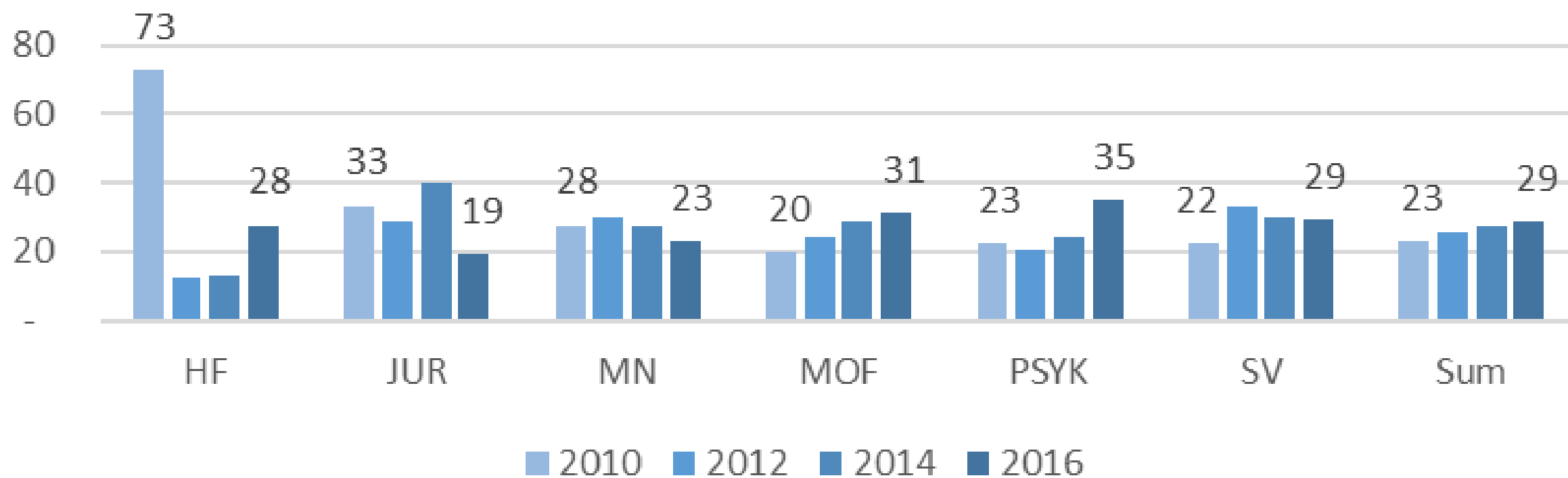
Førsteamanuensis II-stillinger - prosent kvinner



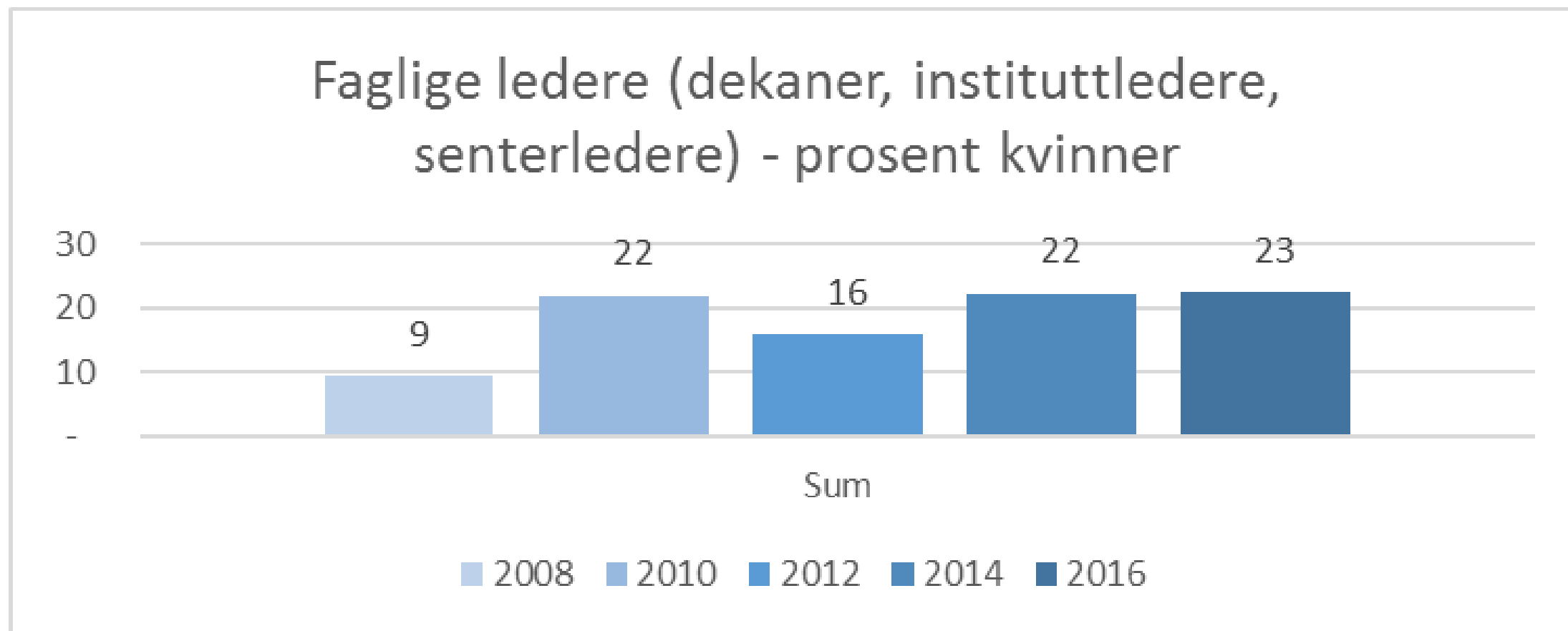
Professor II-stillinger - prosent kvinner



II-stillinger samlet - prosent kvinner

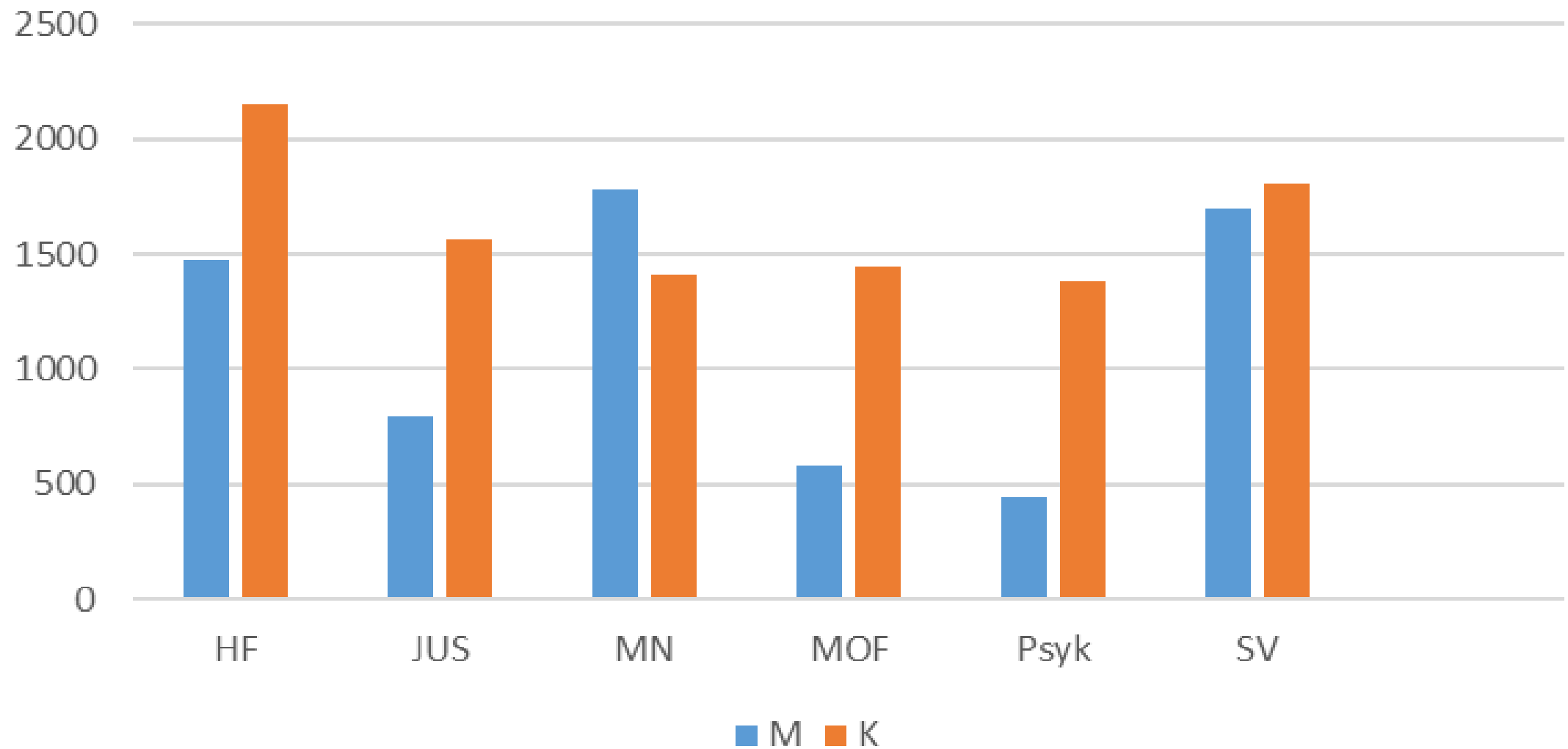


UiB – alle enheter samlet



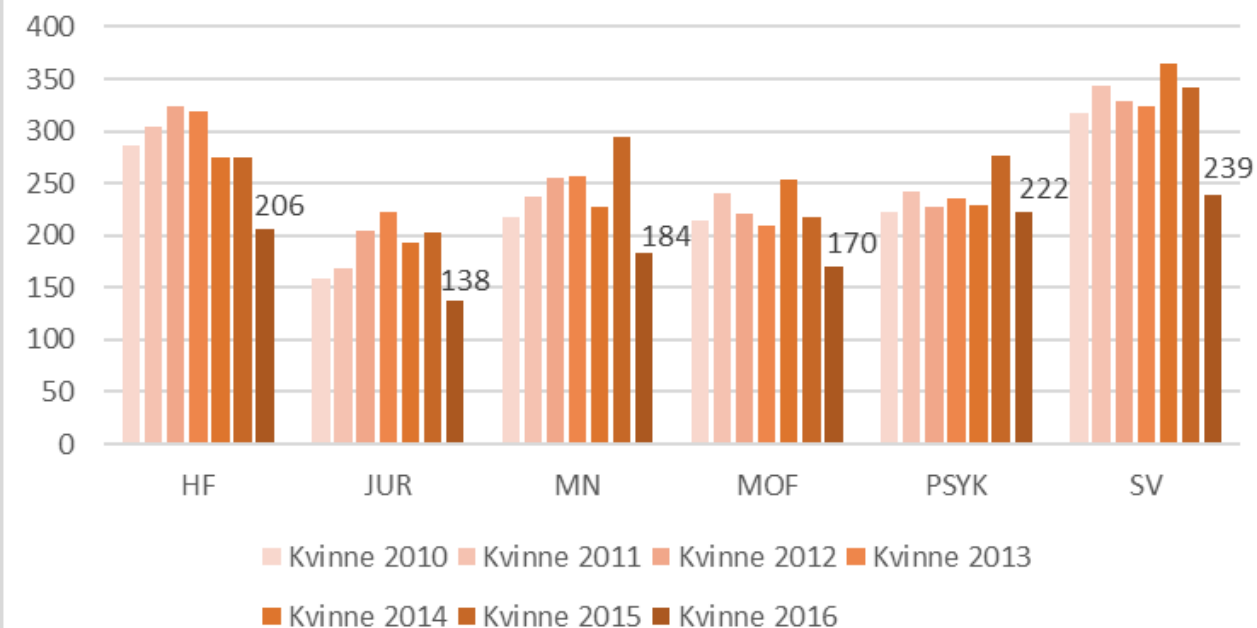
Studenter og grader

Studenter ved UiB i 2016, etter fakultet og kjønn

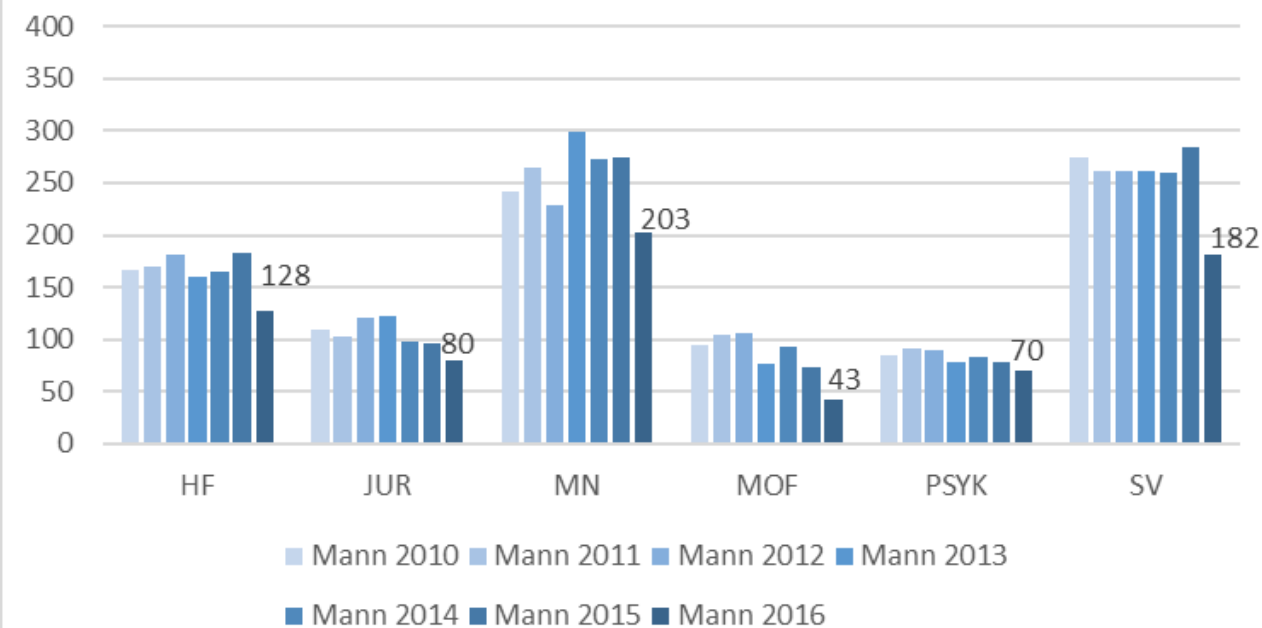


Bachelor og mastergrader ved UiB

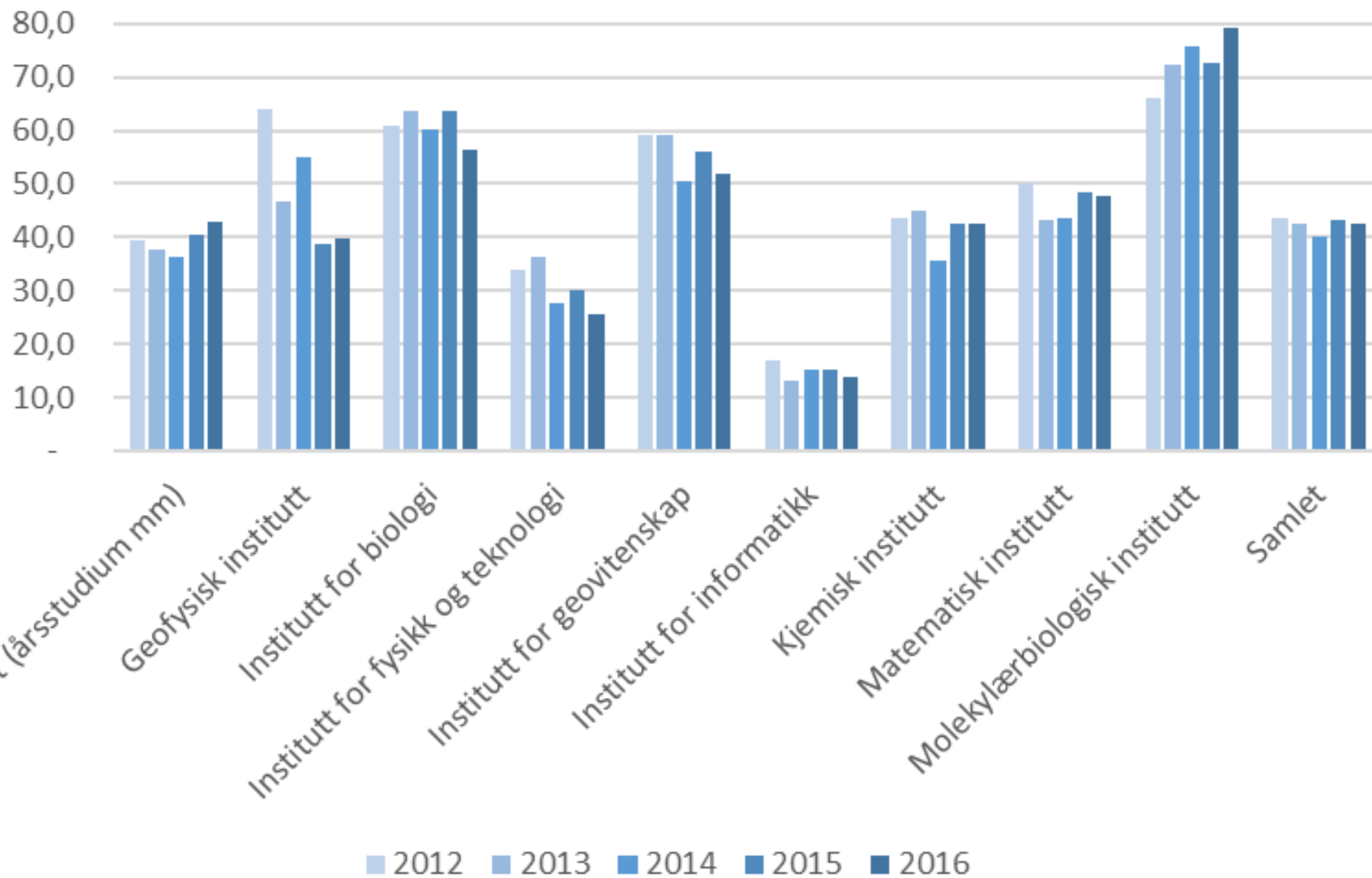
Fullførte grader kvinner



Fullførte grader menn



Kvinneandel blant studentene på Matnat



To be continued..... (i fakultetsstyremøtet 4. mai)

Planen er å utarbeide oversikt over:

- Kvinneandel blant nytilsatte i faste vitenskapelige stillinger
- Kjønnfordeling forskerstillinger
- Instituttvise oversikter