

samlepass

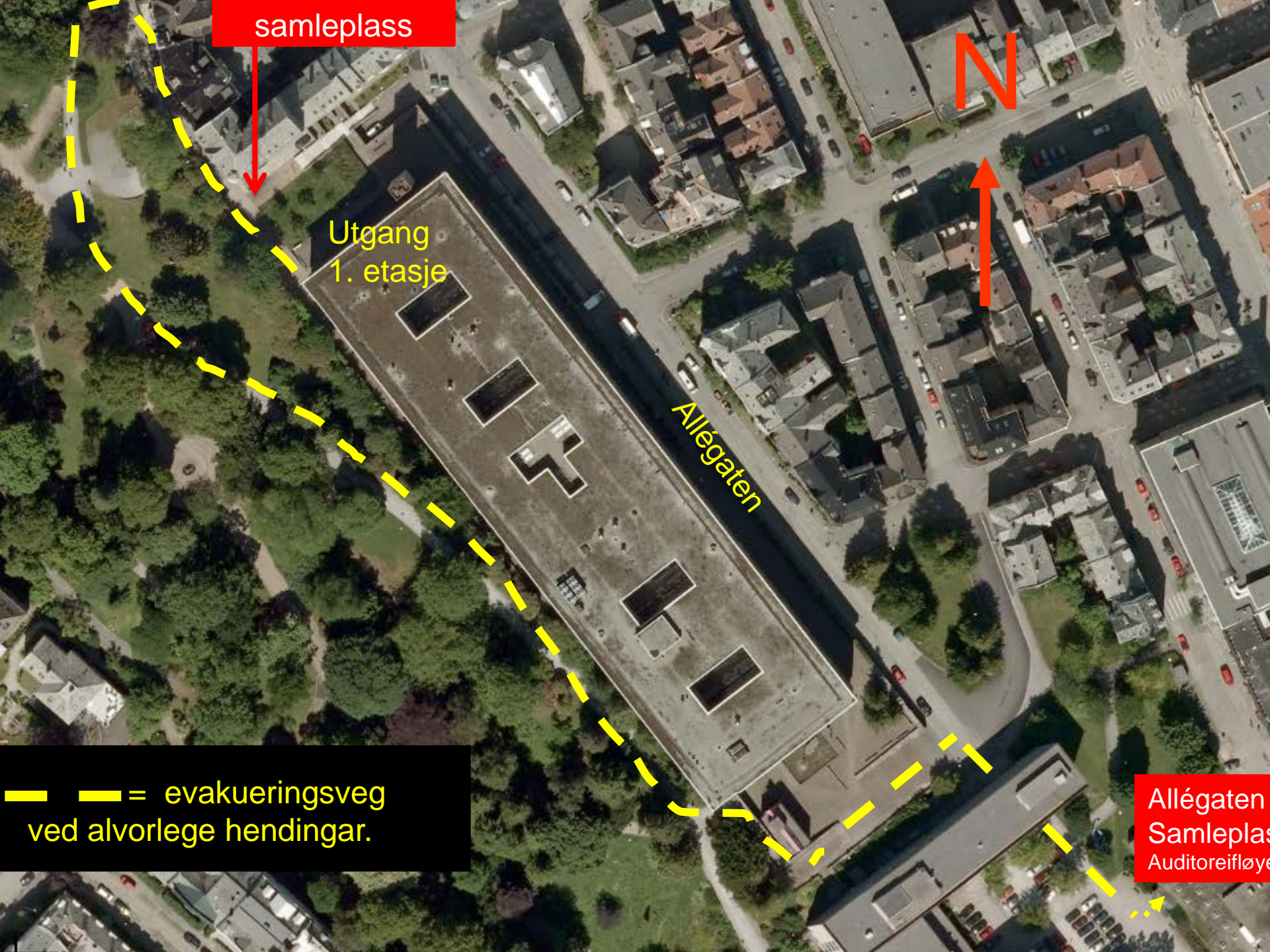
N

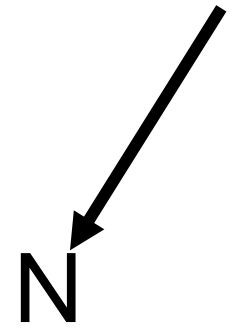
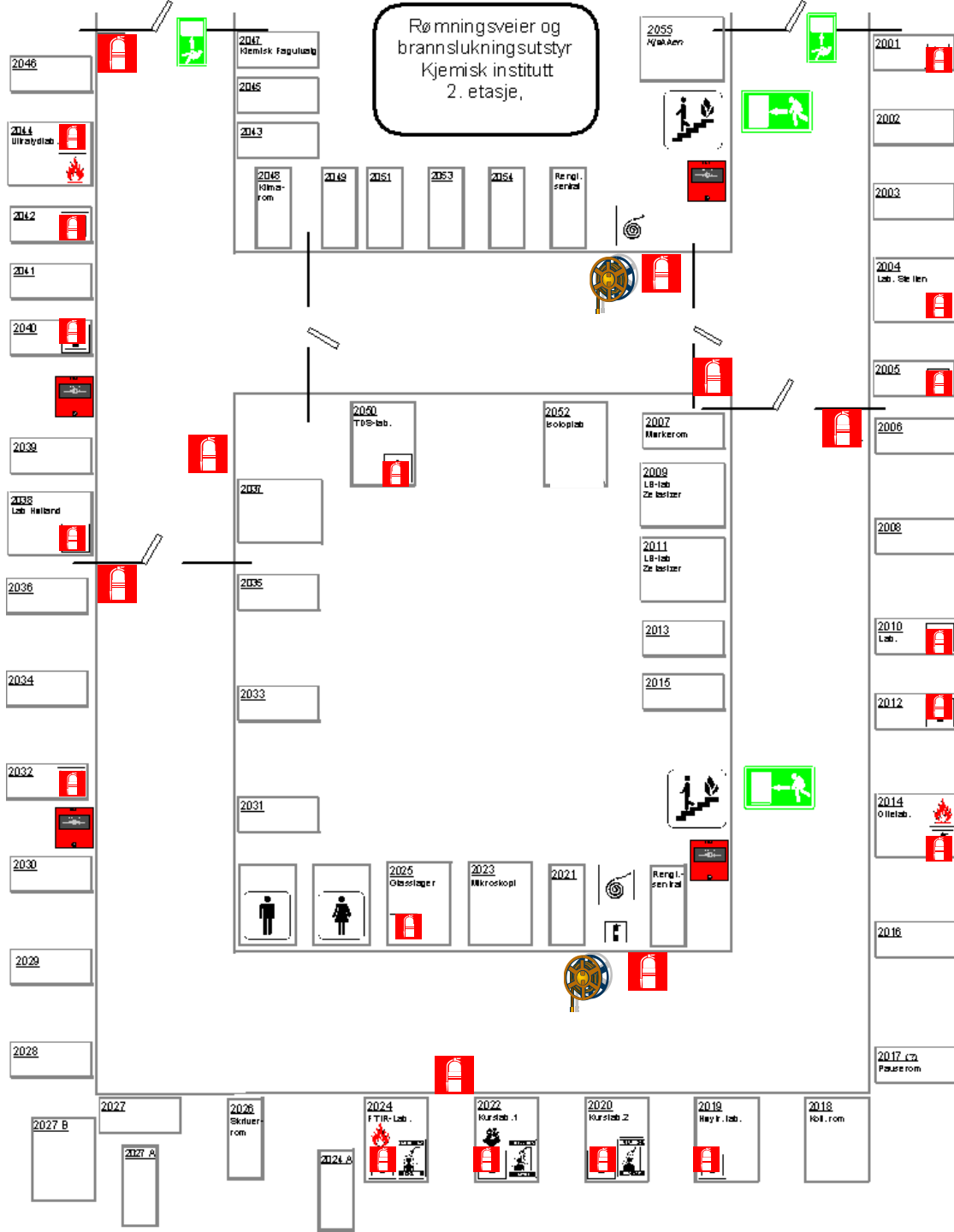
Utgang
1. etasje

Allégaten

— — = evakueringsveg
ved alvorlege hendingar.

Allégaten
Samlepass
Auditorieflyøy





Dersom du oppdager en brann skal du:

-Varsle brannvesenet på **telefon 110** og opplyse om:

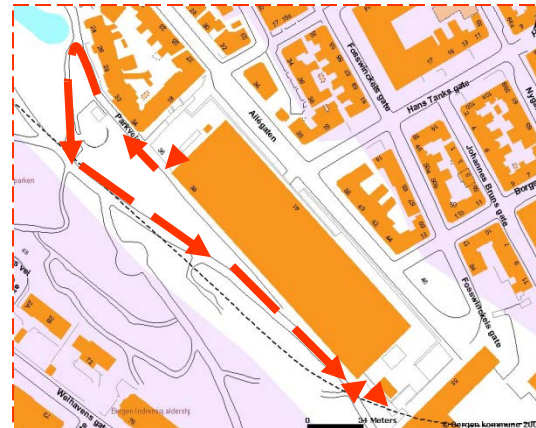
Hvem som ringer

Hva som har skjedd

Hvor det brenner



- **Forsøk å slokke** uten å utsette deg selv eller andre for fare.
- **Utløse brannalarmen** manuelt, dersom alarmen ikke allerede er startet automatisk.
- **Evakuer!**



Evakueringsplan

- Evakuer straks alarmen går
- Lukk vinduer og dører
- Bruk nærmeste rømningsvei
- Gå til samlingsplass. Allégt. 66



Mellombels samleplass

- For de som evakuerer mot nord, er det mellombels samleplass ved Parkveien 34.
- En plassansvarlig med radiosamband vil informere om videre forflytning.

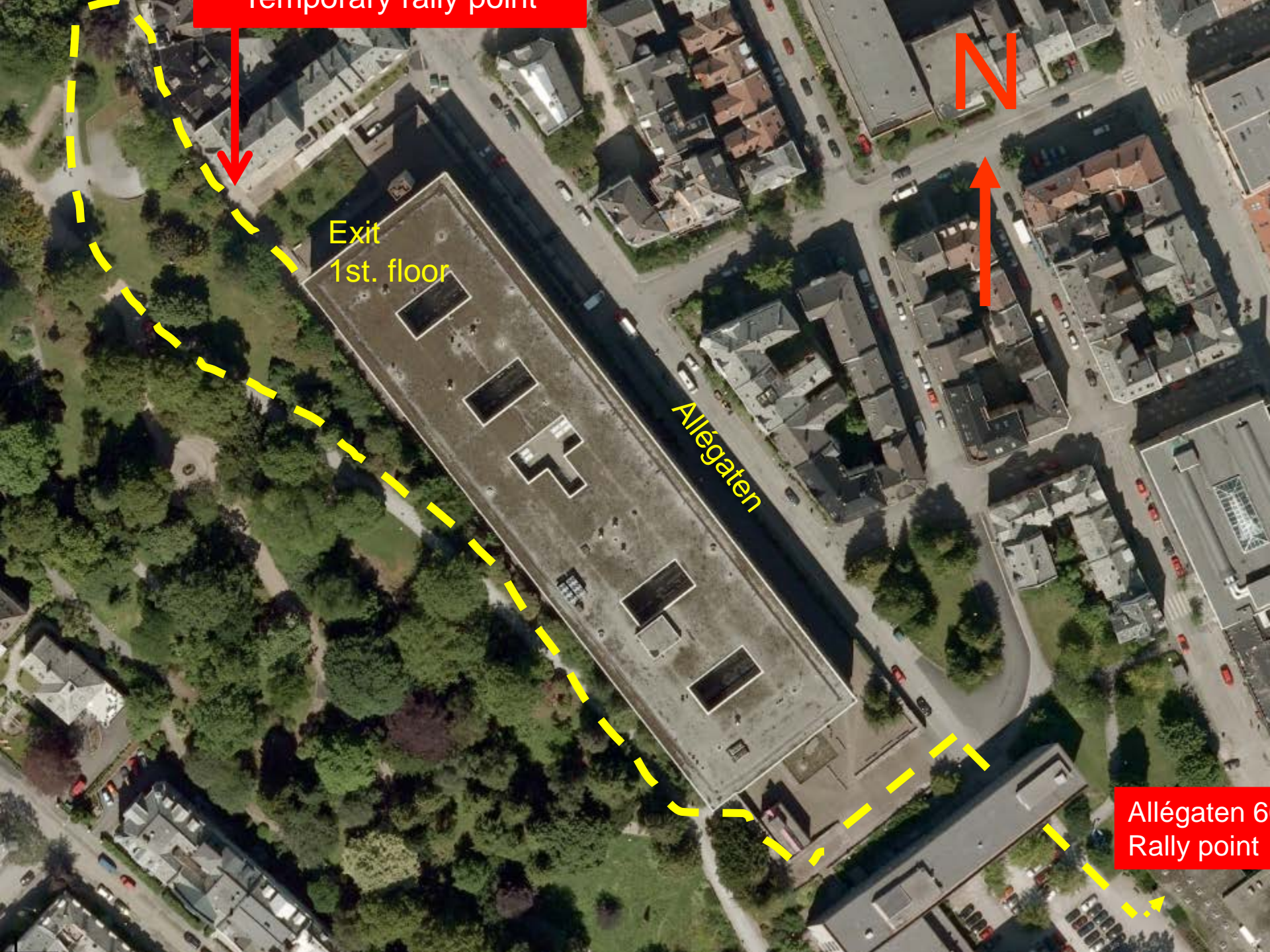
temporary rally point

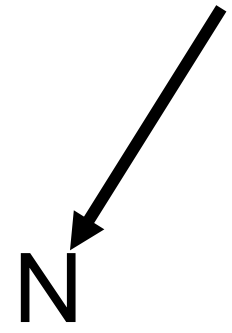
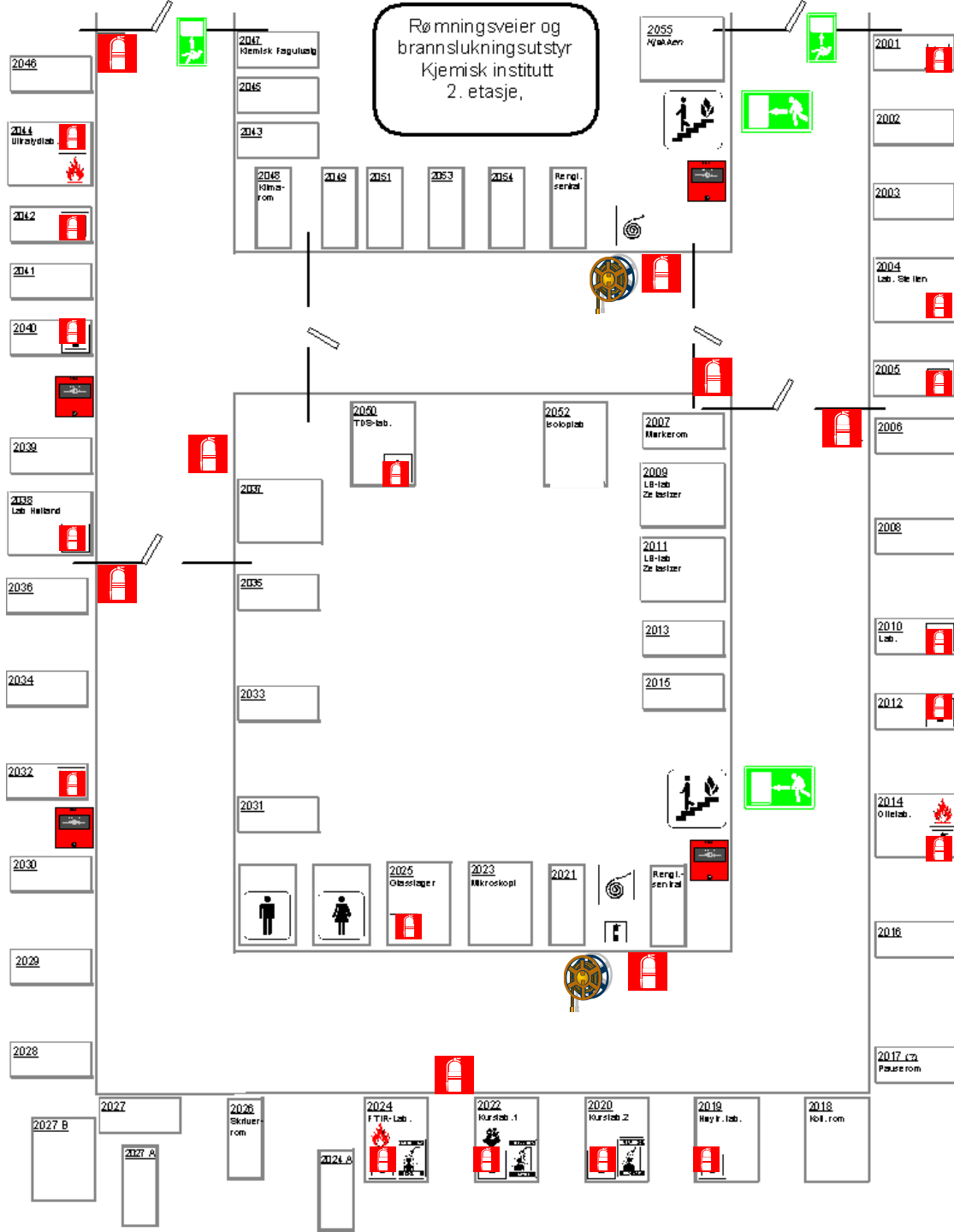
N

Exit
1st. floor

Allégaten

Allégaten 6
Rally point





If **you** discover a fire do the following;

- Call fire department on phone (0)110 and inform about;

Who is calling

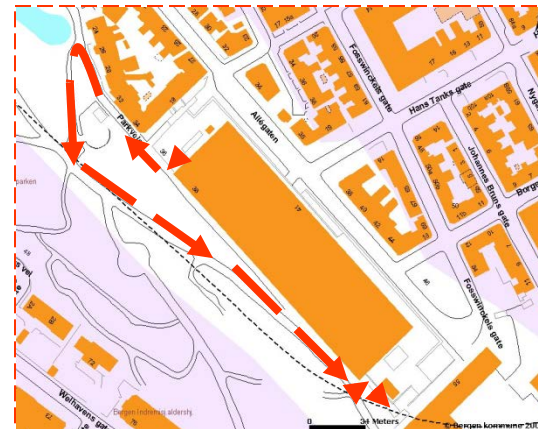
What has happened

Where is the scene of the fire



- Make an attempt of fire fighting using available fire-fighting equipment
- Trigger of fire alarm manually, if the alarm has not started automatically.

- Evacuate!



Plan of evacuation

- Evacuate immediately the alarm is heard
- Close windows and doors
- Use nearest exit
- Meet at rallying point, Allégt. 66



Temporary rally point

- For those evacuating through northern exits, a temporary rally point is at Parkveien 34.
- Information about further evacuation will be given by a deputy.