



Communities fairness perceptions in onshore wind deployment: reflections from two case studies

BEL Lunch
11/11/2024





Project and team



Christina Gkini
SLATE, PsyFA
System Dynamics Group; SV

Models for Innovative Collaboration in Sustainable Land Use Issues (MIC.SULU)

- Funded by Climate and Energy Transition priority area, UiB

Focus:

- Land-use and cover change challenges with introduction of onshore wind technology in Norway.



Ingunn Johanne Ness
SLATE, PsyFa



Birgit Kopainsky
System Dynamics Group; SV



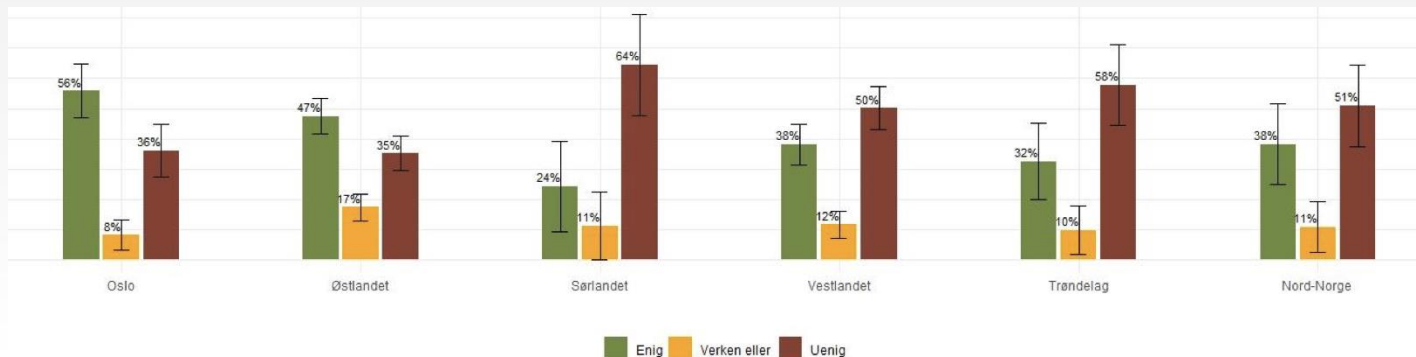
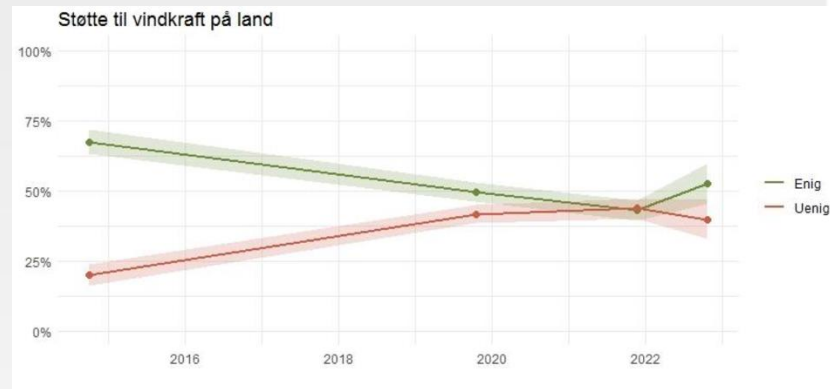
MIC.SULU

Challenge:

- Low acceptance for onshore wind in Norway
- Significant differences in levels of acceptance within the country

Focus:

- Conflicts at the **local level** and (often low) community acceptance of onshore wind



Holdinger til vindkraft på land etter landsdel, Nov. 2021



Group

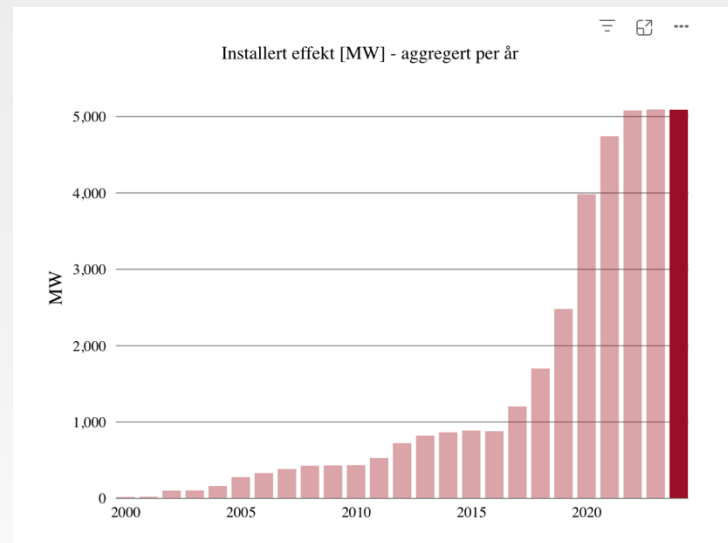


MIC.SULU

- Conflicts can hinder or delay the transition to renewable energy
- Represent opportunities for more inclusive dialogues around sustainability transitions and democratic processes (Aitken, 2010; Batel, 2020);

Questions:

- What are the main factors influencing local community responses to onshore wind deployment in Norway?
 - How do people perceive the fairness of onshore wind projects?



Source: NVE



Community Responses: Main factors

- Two case studies in areas with a recently deployed wind park: Haramsøya, Øyfjellet
 - Differences in level of opposition, physical characteristic of parks, on Sapmi, “character” of area, etc.
- In-depth semi-structured interviews with community members
- Sample (Haramsøya: N=6, Øyfjellet: N=10)
 - Haramsøya consisting of mainly objectors
 - Øyfjellet only one (1) representative of the Saami community





Findings: (In)justice perceptions

Distribution Justice: fairness in the balance of benefits and burdens and their distribution

Main Findings:

- Significant burdens on nature, biodiversity, landscape, and life quality (“sacrifice”) for limited benefits
- Not significant financial benefits - taxation regime unfair
- Ownership scheme
 - unfair if foreign actors benefit while localities face burdens
- Electricity most centered benefit - fairer when benefits localised



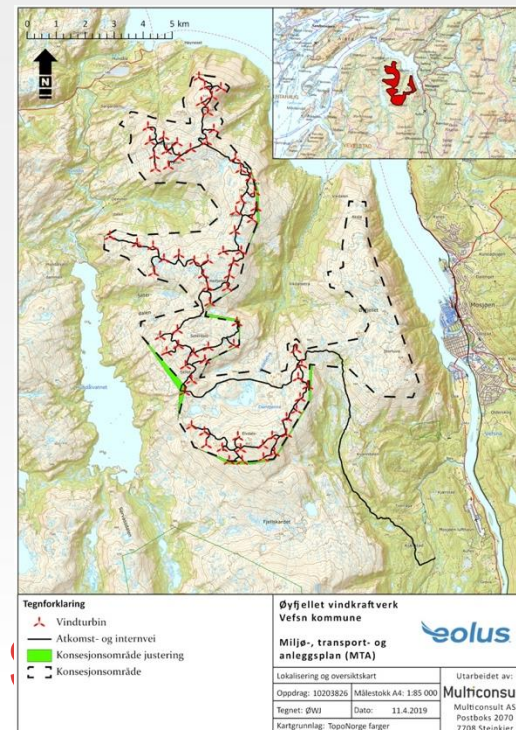


Findings: (In)justice perceptions

Procedural Justice: fairness in the decision-making process

Main Findings:

- Superficial community engagement and only at some stages of deployment
- Information and evaluations not trustworthy and in difficult language
- Confusion / lack of transparency on
 - Who the developers are
 - Who makes which decisions (NVE, Kommune, politicians)
- Power imbalances between community and developer



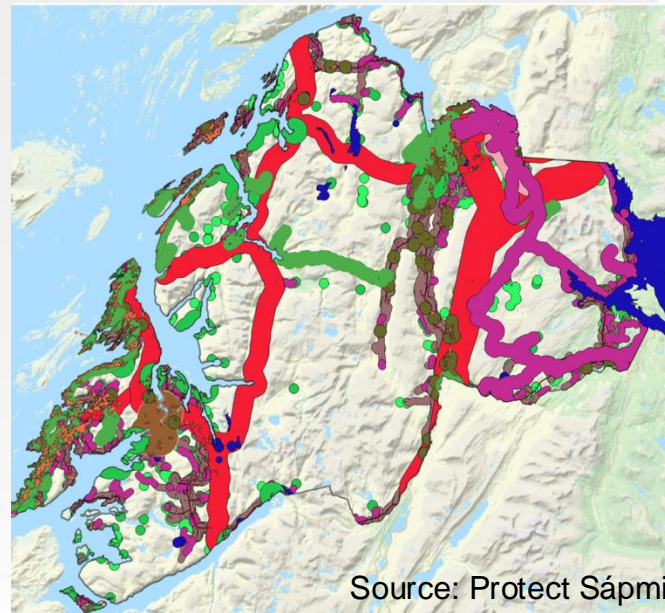


Findings: (In)justice perceptions

Recognition Justice: equal respect for different social, cultural, ethnic, etc. identities

Main Findings:

- Non-/Mis-recognition of impacts on Saepmi and Saami cultural expression, inc. cumulative effects of infrastructure
- Misrecognition of objectors as NIMBYs, emotional, climate change deniers, etc.
- Non-recognition of social, emotional, and political harms



Source: Protect Sápmi.



Significance of Recognition

- Concerns around **respect** of different
 - Historical contexts and lived experiences
 - Values and cultural or environmental identities,
 - Knowledge systems and ways-of-knowing,
- Impact overall response to infrastructure
(Barry, et al., 2008; Fast & Mabee, 2015; Pesch, et. al., 2017)
- Underpin perceptions of fairness in relation to the other two domains
(Lau et al., 2021; Lecuyer et al., 2018; Mang-Benza & Baxter, 2021; Ruano-Chamorro et al., 2022)



Significance of Recognition

Historical context and lived-experiences

- Historically relationships
 - in locality, e.g. Alcoa for Øyfjellet
- Places of individual / collective memories
 - Respected, e.g., Reinfjellet





Significance of Recognition

Values; cultural/environmental identities

- “Typisk Norsk” notions of nature and closeness to nature
 - Landscape loss as an identity threat – esp. with foreign ownership
- Local values
 - e.g., industrial progress or pristine nature

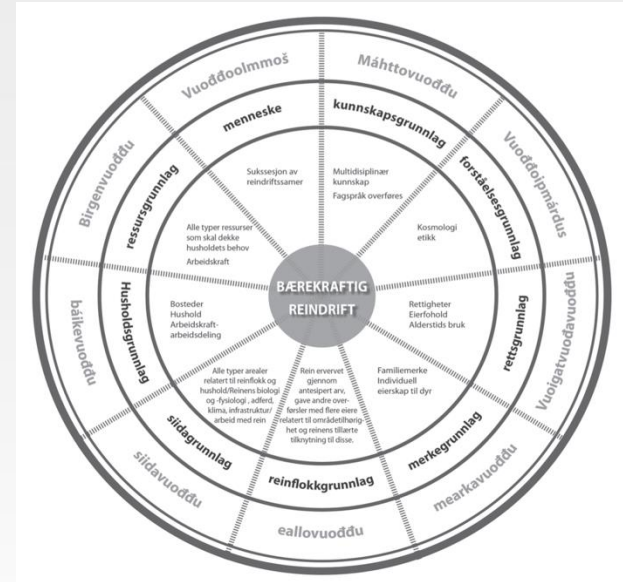




Significance of Recognition

Knowledge Systems; ways-of-knowing

- Lay knowledge or Cultural rationality
 - Experiential knowledge, attachments, emotional responses, etc. e.g., NIMBY-label
- Saami knowledge
 - Particularly around reindeer herding, e.g., Protect Saepmi report



Model for Sustainable Reindeer Herding, Gaup Eira et al. (2015)



Recommendations

- (In)justice perceptions are significant and should be explicitly considered
- Better balance between burdens and benefits relevant to community
 - Consideration of “fit” with locality not only on technical terms
 - Benefits clear and localised; local ownership beneficial
 - Better efforts to minimise impacts on landscape according to local values and experiences
- More engaged decision-making processes
 - Involvement of communities at all stages, inc. planning; continuous attempts for consent, esp. with Saami (Dunlap, 2018)
 - Attention to power imbalances between knowledge systems and between actors
 - Higher involvement of public actors (e.g., in evaluations, in negotiations) in a neutral way.



Bibliography

- Aitken, M. (2010). Why we still don't understand the social aspects of wind power: A critique of key assumptions within the literature. *Energy Policy*, 38(4), 1834–1841. <https://doi.org/10.1016/j.enpol.2009.11.060>
- Barry, J., Ellis, G., & Robinson, C. (2008). Cool Rationalities and Hot Air: A Rhetorical Approach to Understanding Debates on Renewable Energy. *Global Environmental Politics*, 8(2).
- Batel, S. (2020). Research on the social acceptance of renewable energy technologies: Past, present and future. *Energy Research & Social Science*, 68, 101544. <https://doi.org/10.1016/j.erss.2020.101544>
- Dunlap, A. (2018). “A Bureaucratic Trap:” Free, Prior and Informed Consent (FPIC) and Wind Energy Development in Juchitán, Mexico. *Capitalism Nature Socialism*, 29(4), 88–108. <https://doi.org/10.1080/10455752.2017.1334219>
- Fast, S., & Mabee, W. (2015). Place-making and trust-building: The influence of policy on host community responses to wind farms. *Energy Policy*, 81, 27–37. <https://doi.org/10.1016/j.enpol.2015.02.008>
- Inger Marie Gaup Eira, Mikkel Nils Sara, Hanne Svarstad og Svein D. Mathiesen: Norske myter-Samisk reindrift, kapittel 2: Å se som en stat eller som en samisk reineier – To forståelser av bærekraftig reindrift (2015)
- Lau, J. D., Gurney, G. G., & Cinner, J. (2021). Environmental justice in coastal systems: Perspectives from communities confronting change. *Global Environmental Change*, 66, 102208. <https://doi.org/10.1016/j.gloenvcha.2020.102208>
- Lecuyer, L., White, R. M., Schmook, B., Lemay, V., & Calmé, S. (2018). The construction of feelings of justice in environmental management: An empirical study of multiple biodiversity conflicts in Calakmul, Mexico. *Journal of Environmental Management*, 213, 363–373. <https://doi.org/10.1016/j.jenvman.2018.02.050>
- Mang-Benza, C., & Baxter, J. (2021). Not paid to dance at the powwow: Power relations, community benefits, and wind energy in M’Chigeeng First Nation, Ontario, Canada. *Energy Research & Social Science*, 82, 102301. <https://doi.org/10.1016/j.erss.2021.102301>
- Pesch, U., Correljé, A., Cuppen, E., & Taebi, B. (2017). Energy justice and controversies: Formal and informal assessment in energy projects. *Energy Policy*, 109, 825–834. <https://doi.org/10.1016/j.enpol.2017.06.040>
- Ruano-Chamorro, C., Gurney, G. G., & Cinner, J. E. (2022). Advancing procedural justice in conservation. *Conservation Letters*, 15(3). <https://doi.org/10.1111/conl.12861>

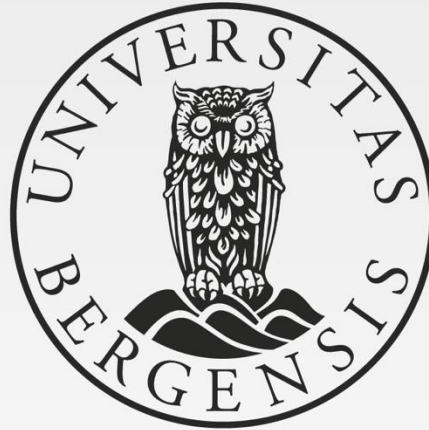


Thank you!

Christina.Gkini@uib.no



SLATE
Centre for the Science
of Learning & Technology



UNIVERSITY OF BERGEN