

Land reformer i Sør Afrika. Jorda tilbake til  
svarte. Den humpete iverksettingen  
gjennom en sentralisert nyliberal stat.  
1990-2006

Thorvald Gran. Emeritus UiB, gjesteforsker USN  
Vestfold



Mervin Cloete (Poelshoek Development Forum) and Hilda Ibsen (AdminAfrica project) at the fence between a commercial farm and the common land of Poelshoek, Lelofontein in the Northern Cape of South Africa. Green pastures on the commercial side, dry burnt pastures on the poelshoek side. (Photo: Thorvald Gran)

ANC land reform started on a good footing with the RDP, but has since moved to a policy of supporting entrepreneurial emerging middle-class black farmers rather than the immiserated rural subsistence farmers. This has shifted government funding and support towards the urban areas leaving rural areas destitute.

In *State Power in Land Reform*, the author relies on a robust theoretical frame, extensive policy analysis and empirical data to advocate for a new engagement with local communities through rejuvenated municipalities, that is, through strong local institutions.

*State Power in Land Reform* provides provides a valuable analytical account for both the historian and the archive.

AFRICAN MINDS  
www.africanminds.org.za



Cover image: Adobe Stock



STATE POWER IN LAND REFORM

Thorvald Gran



# STATE POWER IN LAND REFORM

*Barriers to Implementation in the Western  
and Northern Cape, South Africa, 1990–2006*



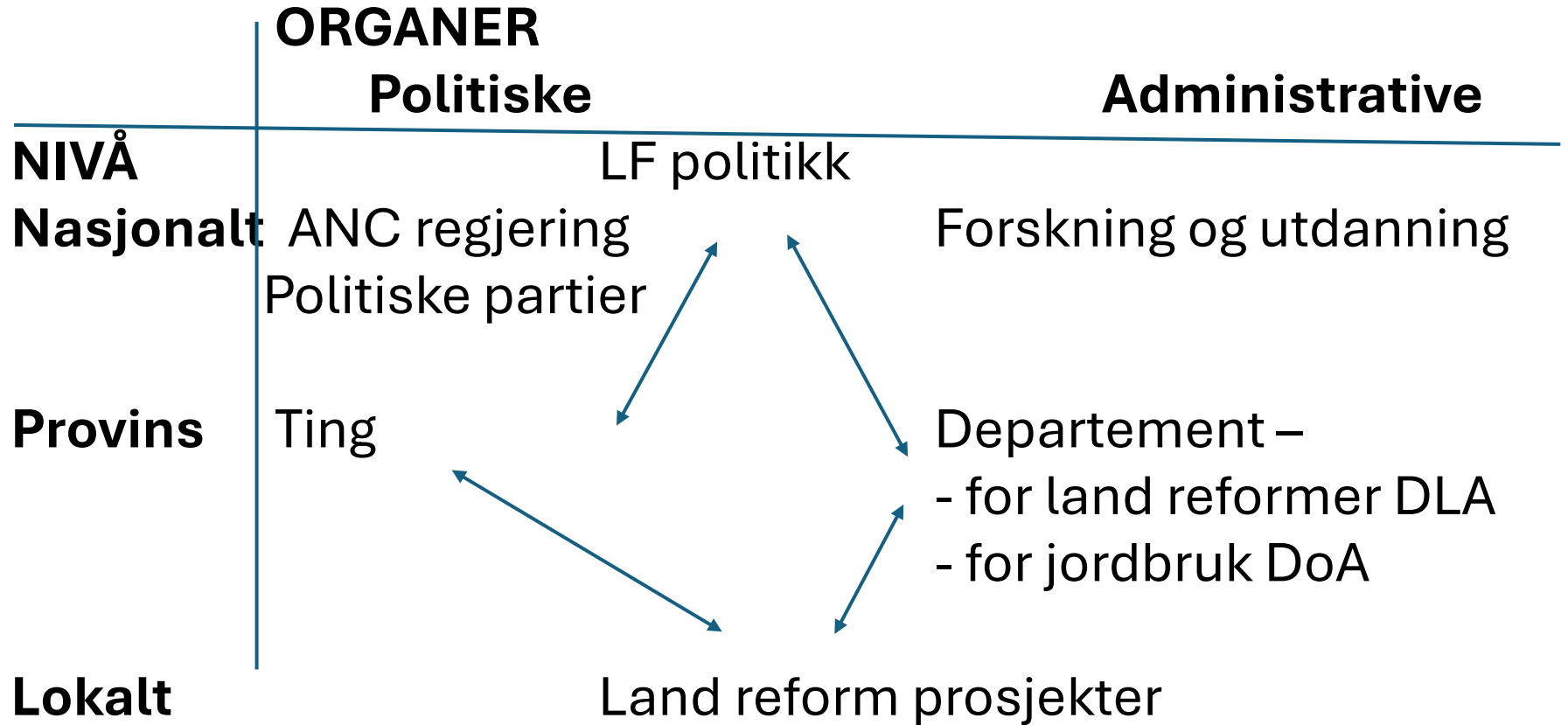
Thorvald Gran





Britene erobrer  
Kimberley 1900

# Land-staten



# Misjonskirken i Saron





# Paulshoek, Leliefontein, Northern Cape SA



Skillet øst-vest i Sør Afrika. Øst- bantustater,  
Vest – jordbruk, finans og misjonsstasjoner



Gariep (Orange) og Vaal elvene. Industri og jordbruk i høysletter. Kalahari ørken mot Botswana





Den første diamanten funnet på bredden til Vaal elven. The hope diamond. 1867. Her innsatt i et hals smykke. Diamant rush. Gull i samme område.

These alluvial deposits were worked on claims belonging to both black and white owners. Diamonds were discovered in Kimberley after Erasmus Jacobs found a transparent rock on his father's farm in the Northern Cape, in 1867



# District Six : NÅ: grønt område midt i byen



The only structures that remain in District Six are its churches, mosques and schools. Most of the land is barren and unoccupied.





Folk krever bostedene i D6 tilbake.  
Demonstrasjon 2001. Hvite vil ikke bygge der

