

# HOW IS IT TO BE PLUS CUSTOMER?

## HOW IS IT TO BE PLUS CUSTOMER?

- What is a plus customer. It is a customer who supplies more power to the power grid than he consumes, at times of the day. The total power supplied is less than the customer yearly power consumption.



Solbære AS [www.solbaere.no](http://www.solbaere.no)

# THIS YOU NEED TO BE A PLUS CUSTOMER

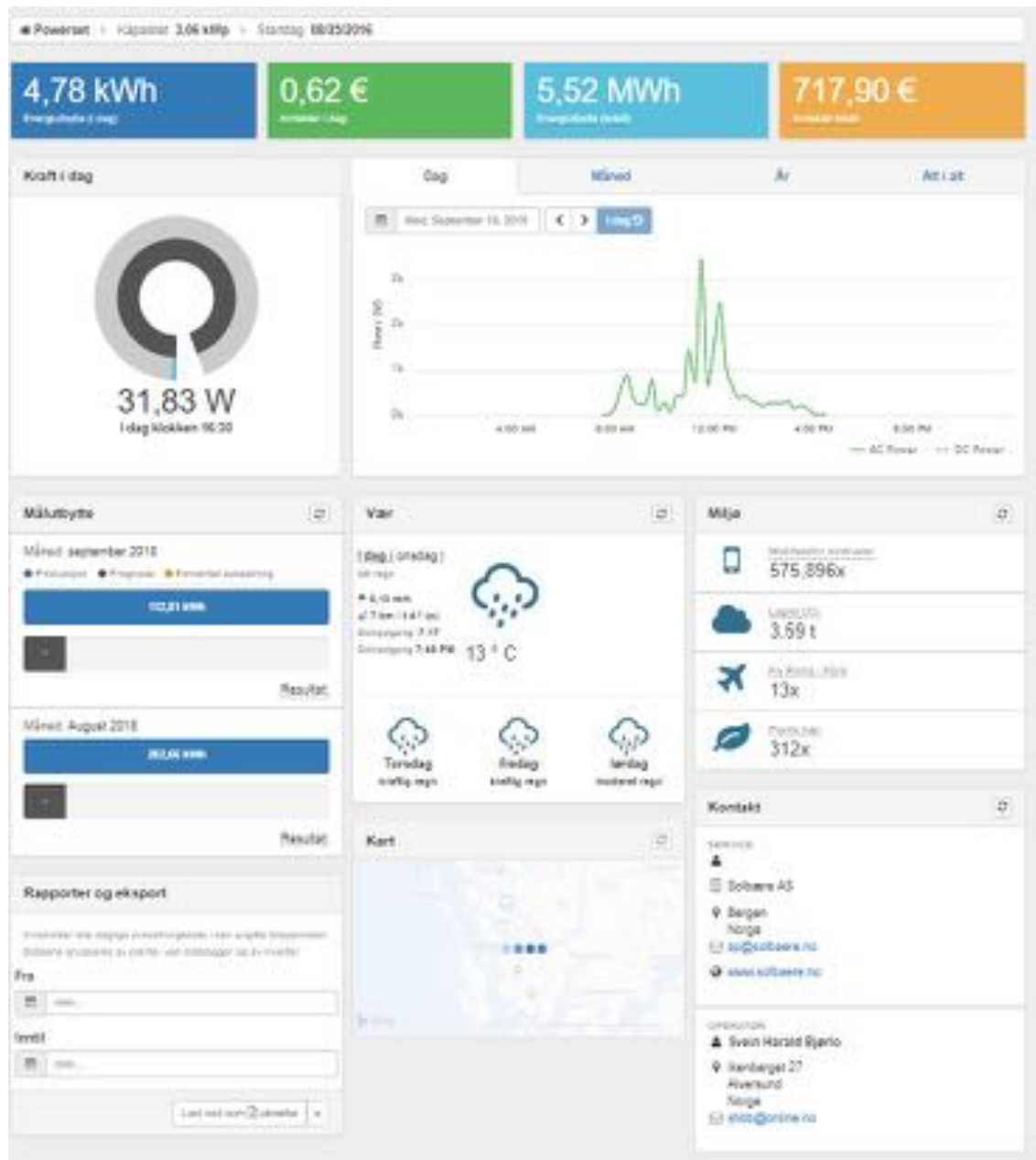


I start as a Fjordkraft customer, they sell electricity to end-users. BKK owns the power grid in this council, it keeps track of the consumption and delivery of my solar power back to the power grid. They then bill for the rent for the power lines.

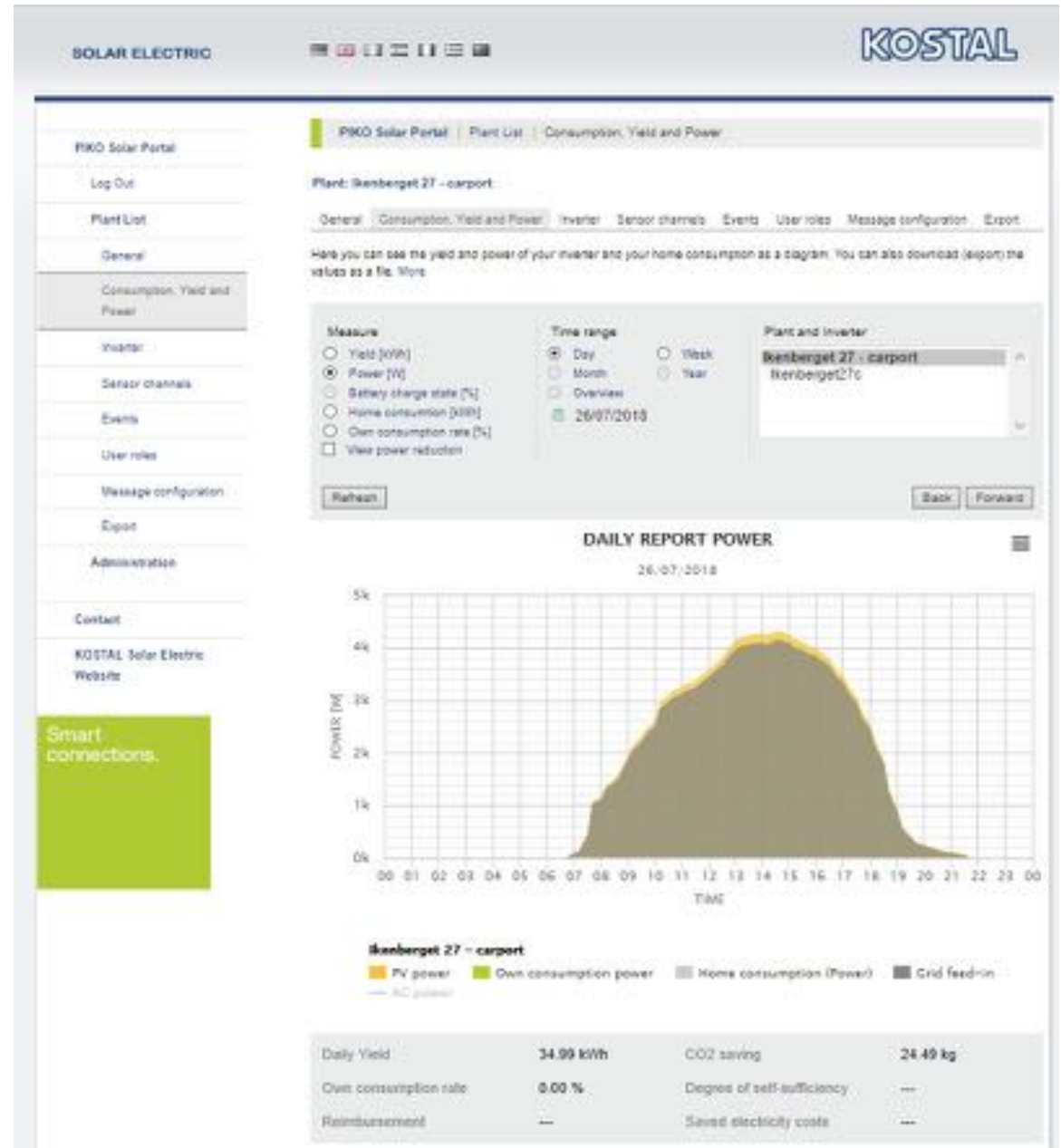
Fjordkraft "forgot" every month to deduct from my electricity bill my solar power delivery.

Switched to Tibber, but the grass was not greener here either. They asked me to switch the meter, as they did not get data from the one I had. Changed this 29th May, Switched back to Fjordkraft. Contacted BKK for the first time in late July. They did not have the right meter registered on my house.

I continued to contact BKK and Fjordkraft many times. Yesterday I was informed by my contact in Fjordkraft that BKK must manually enter the numbers for the plus customers. That's why it's not easy, was the explanation One must keep up with all the time. This because they use different systems that do not talk to each other. I have been plus customer for over 2 years.



1 plant of 3.06 kW



2 plant of 6.2 kW

Total produced plant 1: 5529 kWh in 2 years

Total produced plant 1: 5959 kWh in 1 years

812	9.7.2018	13,02
813	9.7.2018	13,02
814	9.8.2018	5,31
815	9.9.2018	3,15
816	9.10.2018	3,15
817	9.11.2018	2,89
818	9.12.2018	5,78
819	9.13.2018	4,3
820	9.14.2018	2,04
821	9.15.2018	8,23
822	9.16.2018	1,14
823	9.17.2018	3
824	9.18.2018	10,5
825	9.19.2018	4,78
827		5529,62
828		

Anlagenenertrag    Datenloggererträge

Klar



Total produced 10 500 kWh in 2 years with 50 (18 plus 32) solar panels supplied and assembled by Solbære AS [www.solbaere.no](http://www.solbaere.no)

What can we then use 10 000 kWh?



I have used 20,000 kWh to drive 100,000 km. So I can drive my Tesla 50,000 km on the power I've made in 2 years.