

# Marine Biological Station

at

Espeland

just south of Bergen, Norway

on Raunefjord



Marine Biological Station, UiB



View of Station from the sea showing buildings, dock and mesocosm raft.



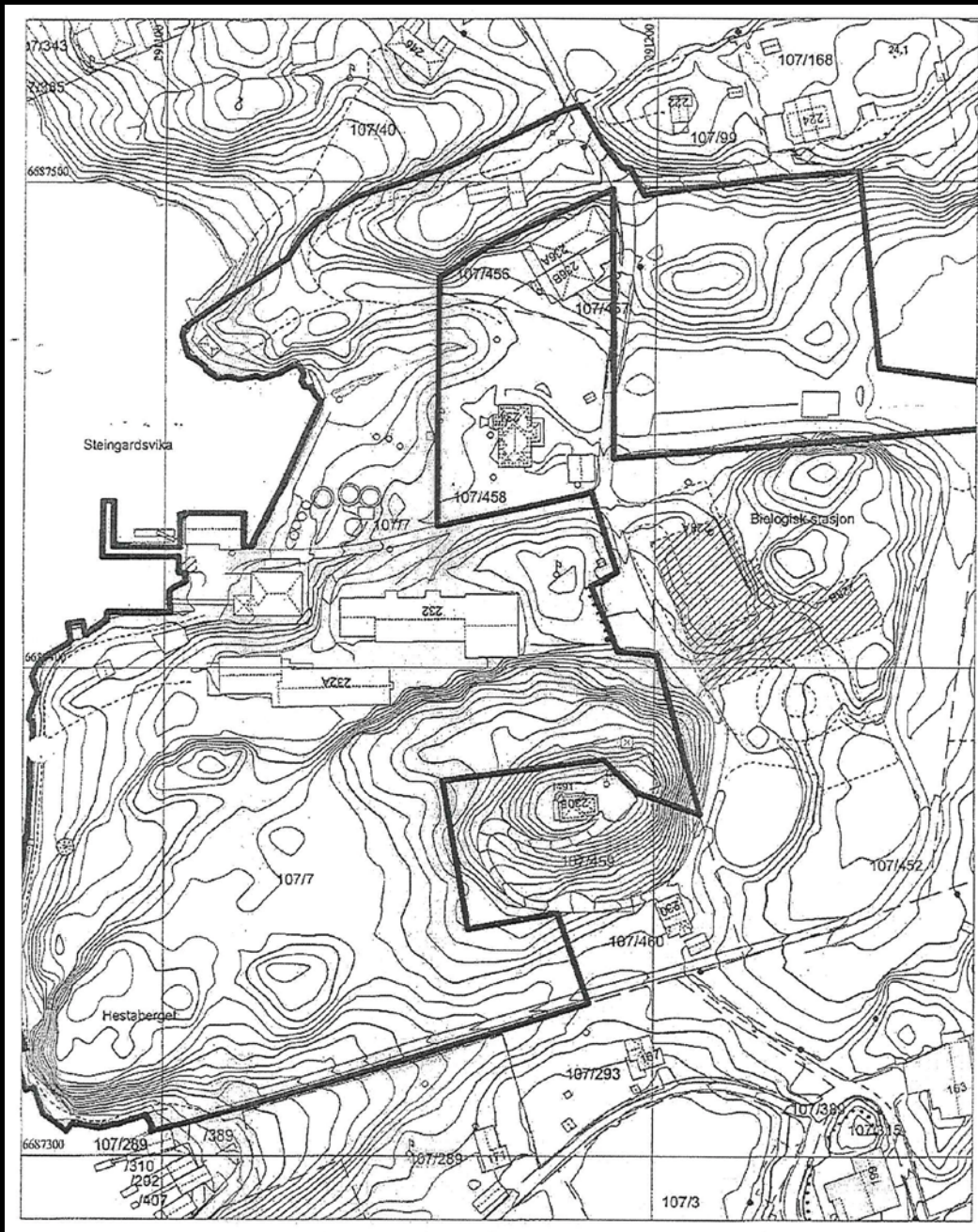
The *RV Hans Brattström* is moored at the dock.



Marine Biological Station, UiB



The Station has a number of boats.



Marine Biological Station, UiB

# Mesocosms





## Raft with floating mesocosms



Marine Biological Station, UiB



an experiment in progress



Marine Biological Station, UiB



raft-shore communication



The raft is not so far from shore.



The Station also has several land-based mesocosm arrays.



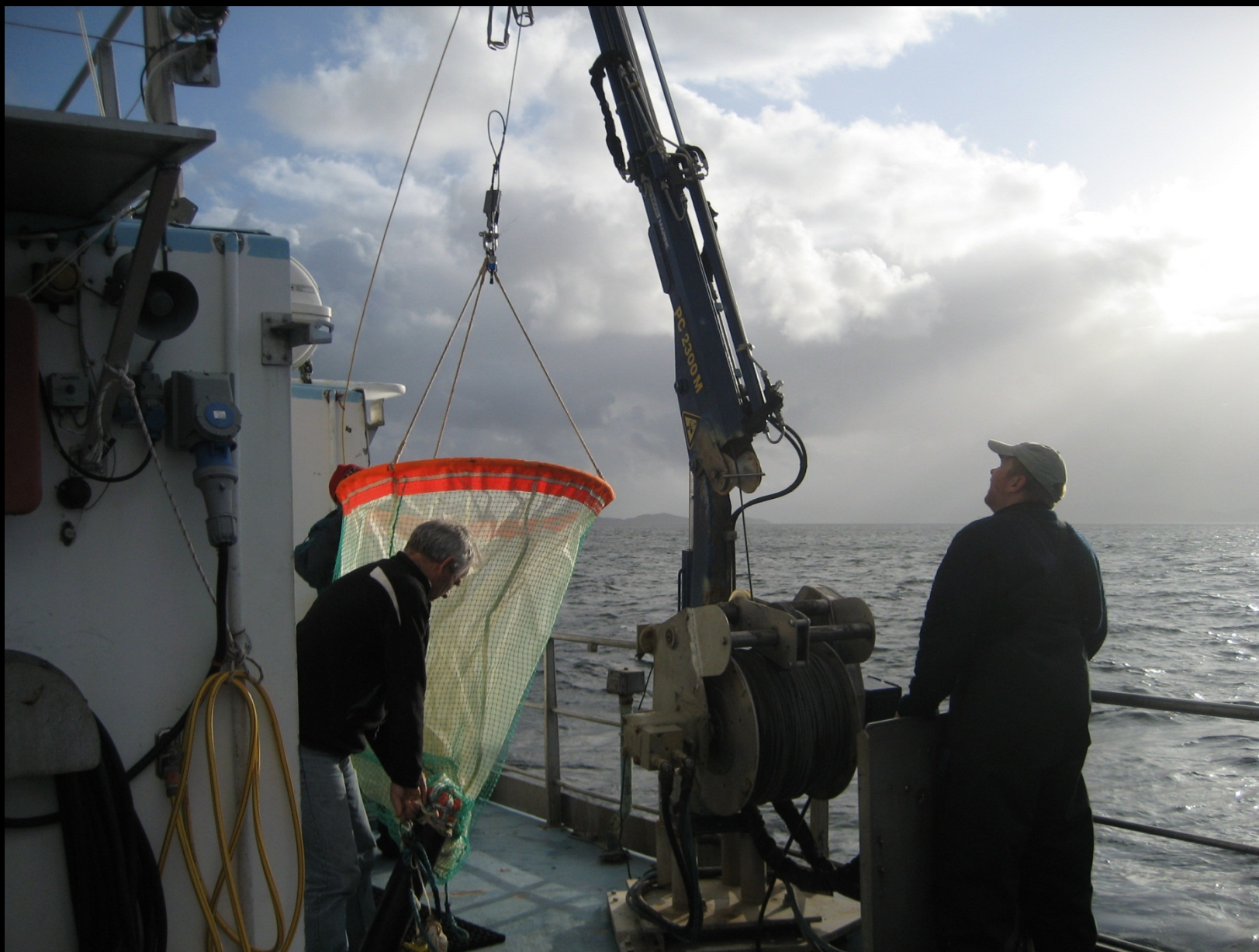
Marine Biological Station, UiB





Marine Biological Station, UiB

Some of the gear aboard the  
*Hans Brattström*



Marine Biological Station, UiB





Marine Biological Station, UiB



Marine Biological Station, UiB

# Some views of the research and instructional facilities



The lecture / group lab facilities can accommodate up to 23 students / researchers.





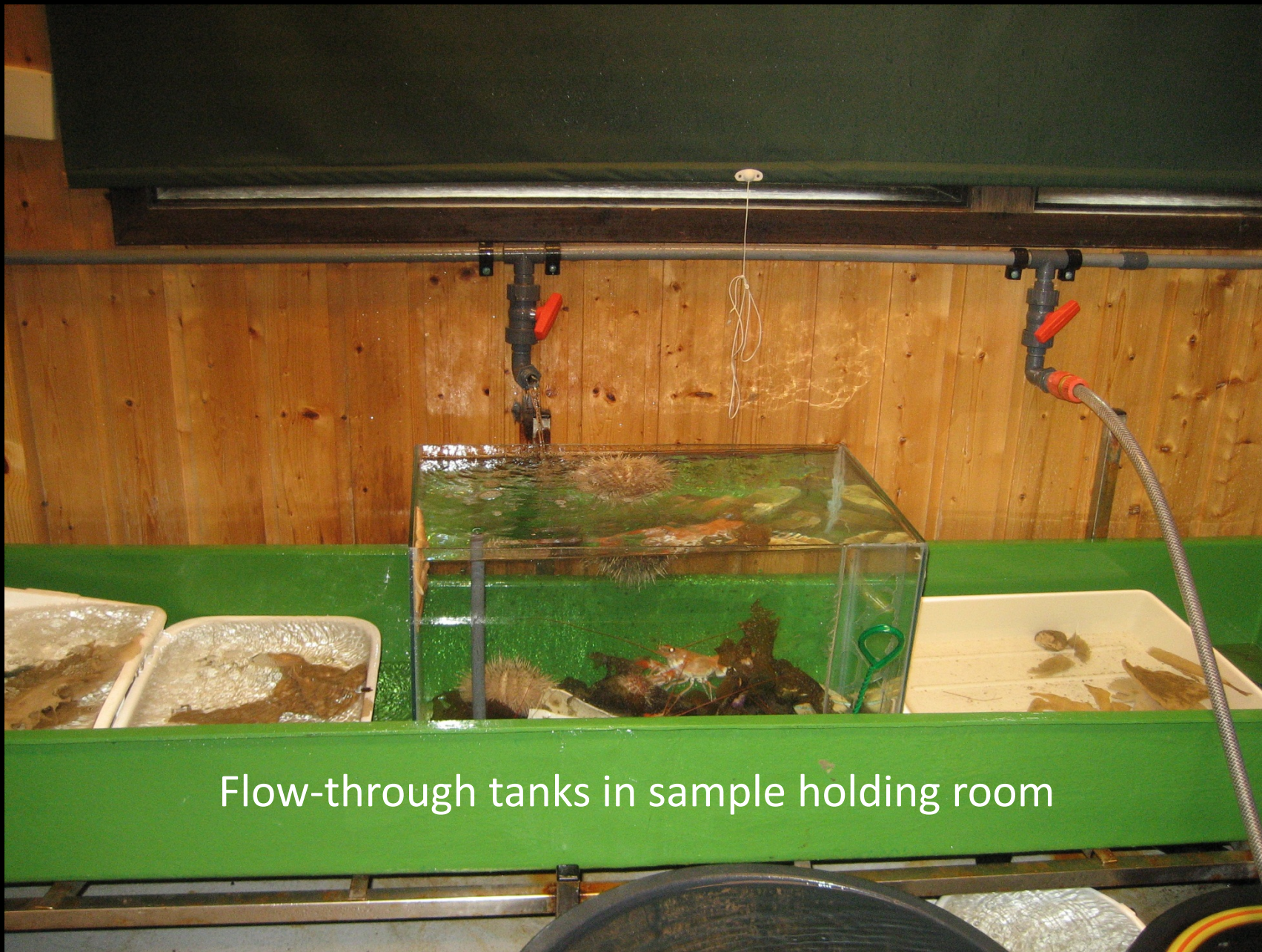
Marine Biological Station, UiB



Organisms collected for identification during a Marine Biology course



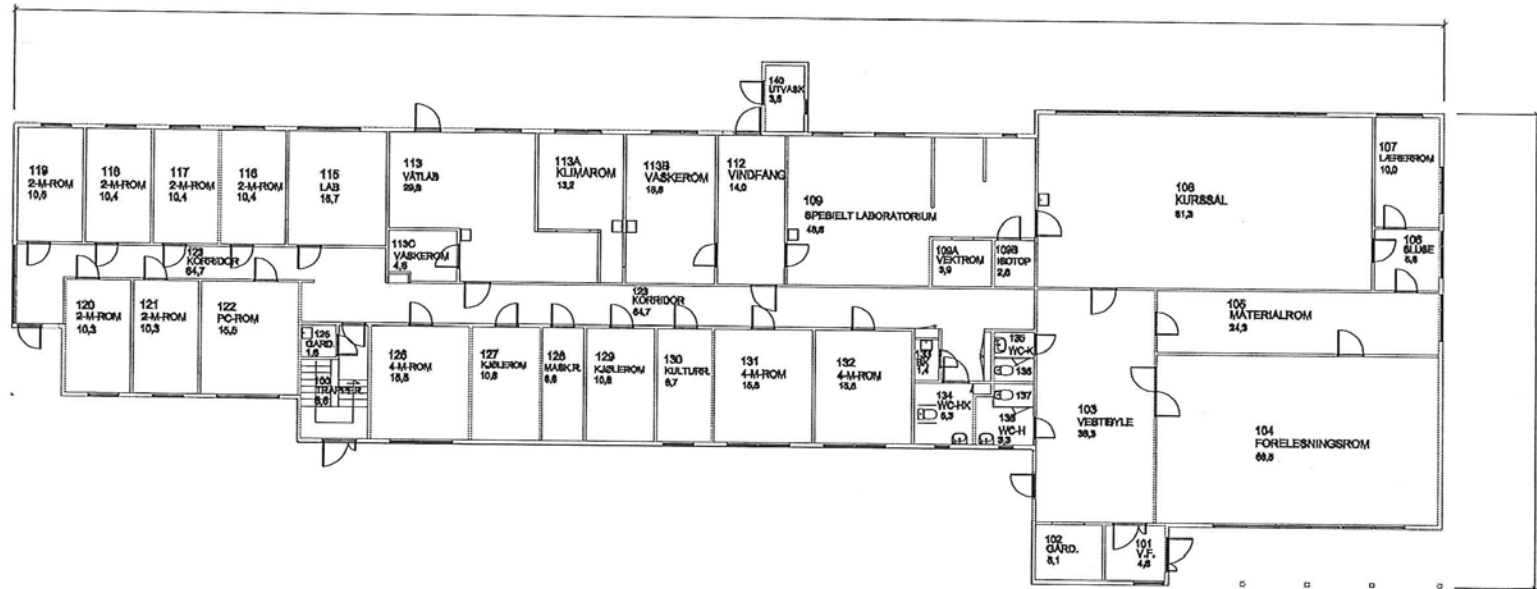
Marine Biological Station, UiB



Flow-through tanks in sample holding room



Marine Biological Station, UiB



office / lab / classroom floor plan

one of the  
marine  
equipment  
lockers



Marine Biological Station, UiB



Marine Biological Station, UiB





Marine Biological Station, UiB

# Living quarters

20 rooms with private bath



Dining room



Common / living room



More common / living area



Users are responsible for preparing their own meals in the well-equipped self-service kitchen.



Marine Biological Station, UiB



Marine Biological Station, UiB





Marine Biological Station, UiB



shared laundry facilities



even inclement weather has a bright side!



scenic view on way out to the main fjord