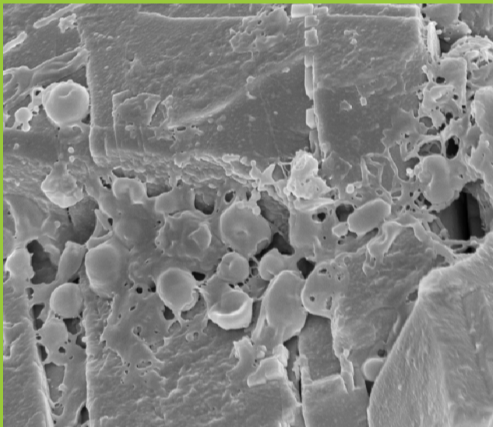
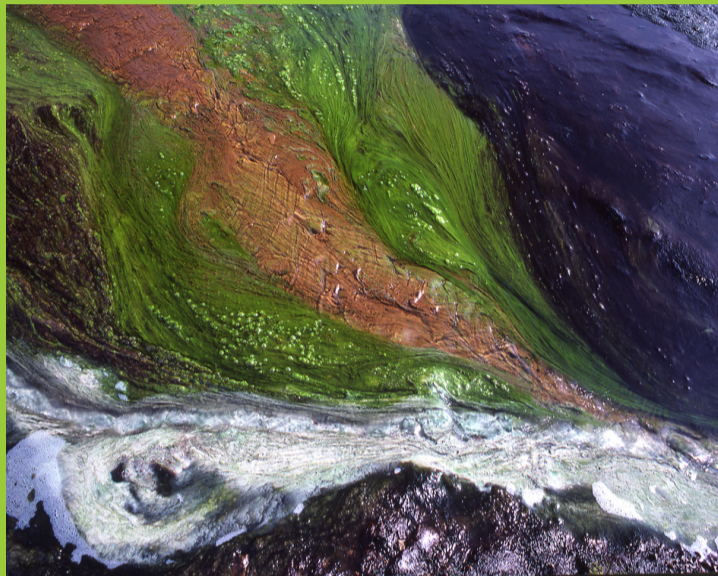


NORDIC FIELD COURSE IN GEOBIOLOGY

Reykjavík, Iceland, 1. - 12. August 2011



Iceland, with its unique situation on a mid-ocean ridge, and with countless hot springs and other geothermal features teeming with life, constitutes an ideal natural laboratory for the study of the interface between the geosphere and the biosphere.

This course is intended for MSc and PhD students (5 ETCS). It will include lectures, field trips as well as practical exercises designed to introduce the students to standard field and laboratory techniques used in microbiology, molecular ecology, biogeochemistry and geology.

Application deadline: March 15th, 2011.

Further information can be found on:

<http://www.sdu.dk/summercourse/geobiology>

Contact persons for participating countries:



Ingunn Thorseth, ingunn.thorseth@geo.uib.no



Kirsten Habicht, khabicht@biology.sdu.dk



Juha Karhu, juha.karhu@helsinki.fi



Volker Bruchert, volker.bruchert@geo.su.se



Guðmundur Óli Hreggviðsson,
gudmundur.o.hreggvidsson@matis.is